

ShaRae Mansfield

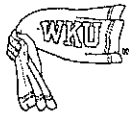
ShaRae Mansfield is in her second year on the Western Kentucky University Women's Basketball staff. She will serve as Director of Basketball Operations in 2013-14 after serving as an assistant coach in 2012-13.

No stranger to WKU and Lady Topper Basketball, Mansfield helped the Lady Toppers to 88 victories during her four seasons on the Hill (1997-1998 to 2000-2001). She also helped lead WKU to a pair of NCAA Tournament appearances in 1998 and 2000, trips in which the Lady Toppers advance to the tournament's second round.

At the end of her career, the Louisville, Ky., native was just the second player in program history to score 1,000 points and pull down 1,000 rebounds in a career. She currently ranks fifth on the all-time scoring list with 1,804 career points, and is fourth in career rebounds with 1,000. Mansfield also ranks seventh in career scoring average (14.2 ppg), sixth in field goals made (700), fifth in field goal percentage (.536), sixth in free throws made (403), seventh in rebounding average (7.9 rpg) and fourth in blocked shots (133).

Her efforts during her junior season earned her second-team All-America honors by the Women's Basketball News Service, and honorable mention All-America accolades from *Basketball Times* in 2000. She was selected in the third round of the 2001 WNBA Draft by the Houston Comets, but injuries shortened her career. She retired from playing following a short stint overseas in Israel.

Mansfield was a two-time all-state selection and *Parade Magazine* and Gatorade All-American during her prep career at DuPont Manual High School. During her junior season at Manual, she was coached by current Lady Topper head coach Michelle Clark-Heard.



Hilltopper Sports Information



Western Kentucky University

For Immediate Release / Wednesday, Nov. 13, 1996
Women's Basketball / Contact: Sally Krauss

Lady Topper 1997-98 Roster Enhanced By Addition of DuPont Manual Star ShaRae Mansfield

Bowling Green, Ky.-- ShaRae Mansfield, a 6-2 forward from DuPont Manual High School in Louisville, Ky., has signed to play collegiate basketball for the Western Kentucky University Lady Toppers.

Mansfield, voted as a 1996 Preseason Second Team All-American by *Street & Smith*, was a *Courier-Journal* All-State selection last season as a junior and was named to the All-District, All-Region and All-State teams. In addition, she was named to the All-Tournament team at the LIT Tournament.

"ShaRae is a tremendous athlete and rebounder," DuPont Manual head coach Mina Todd said. "She has so much basketball ability and a real knack for knowing where the ball will be."

Mansfield averaged 20.1 points, 11.5 rebounds and 7.0 assists a game during the 1995-96 season. She collected 145 total blocked shots and 92 assists last season, leading the Lady Crimson to a 20-11 record and a runner-up finish in the region. Entering her senior season, she has totaled 1,200 career points.

"ShaRae is the type of person that a coach looks forward to seeing every afternoon at practice or in the hallway at school," Todd said. "She is just a superior, super person with an outstanding personality. She is very coachable, a hard worker and always eager to learn."

As a junior, Mansfield played on a torn ACL of the left knee which was partially torn during her sophomore season. Despite the injury and pain, she still led the team in scoring and rebounding. Following reconstructive surgery, she sat out basketball camps last summer to let the knee heal.

"She is now completely healed and has been looking absolutely outstanding in practice," Todd said. "I shudder to think what kind of exceptional player she will be this year on a healthy knee."

With her return to top form, Mansfield will be looking to lead her team to its first appearance in the state tournament during her career.

"ShaRae is a quiet leader," Todd said. "She leads by the example of her hard work. She has become more accepting of her role as a leader this year and the challenge of being a vocal leader."

Despite her tremendous athletic talent, basketball was

not Mansfield's first consideration when she choose to attend Western.

"What attracted me to Western first were the academic programs," Mansfield said. "I'm interested in majoring in mass communications and Western is a good school for that field. After academics, I looked at the basketball program and I was attracted to the atmosphere of the team."

Now that she has made her decision, Mansfield is anxious to be a part of that Lady Topper atmosphere.

"I feel that I can bring quickness and leadership to the team by working with the other players to pick up the pace of the offense," she said.

Western Kentucky head coach Paul Sanderford is also anxious to have Mansfield join his program.

"I believe ShaRae Mansfield is the best college prospect available in the state of Kentucky this year," Sanderford said. "I think she can be an impact player and that's why she's a first or second team All-American in all the preseason high school polls this year. She's a great kid and a good student. She's been well-coached in high school and I think she has a chance to be a first team All-American this year in high school."

Mansfield, the daughter of Jerry and Pamela Williams, was coached the past three years by Kenny Smith, who also coached former Lady Topper and current DuPont Manual assistant coach Gwen Doyle (1994-95). Another former Lady Topper, Michelle Clark (1986-90) was an assistant coach under Smith and was influential in Mansfield's decision to attend Western.

Todd believes her program's ties to Western will help Mansfield in her transition to the Lady Topper style of play.

"I believe that ShaRae will fit well into the program at Western and into Coach Sanderford's system," Todd said. "She is already a step ahead of others as far as fitting into Western's program and style of play."

Sanderford compares Mansfield to Western's first Kentucky "Miss Basketball" signee and Kodak All-American Lillie Mason (1982-83, 1985-86).

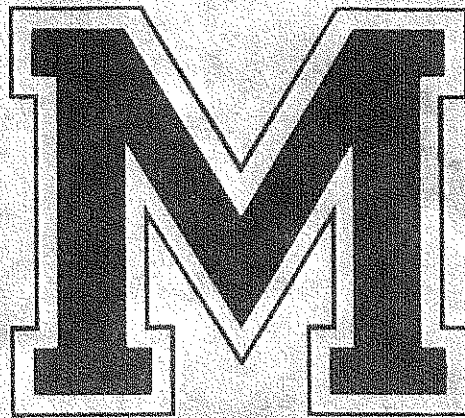
"ShaRae is thin and quick with great jumping ability," Sanderford said. "She is a prototype Lillie Mason post player. My only regret about ShaRae is that we have to wait a year for her."

—WKU—

Office of Sports Information / Room 146 / E.A. Diddle Arena
Western Kentucky University / 1 Big Red Way / Bowling Green, Ky. 42101
Telephone -- (502) 745-4298 / FAX -- (502) 745-3444

du Pont Manual High School

Hall of Fame



This is to certify that

ShaRae Mansfield

was inducted into the school's Alumni Association Hall of Fame on April 22,
2007, by virtue of outstanding accomplishments in her lifetime
bringing
favorable recognition to the name of du Pont Manual High School, an
institution founded in the Commonwealth of Kentucky
in the year 1892.

A plaque listing these accomplishments will be displayed in a prominent
place in the high school as long as it remains a viable institution.

Beverly Keepers

Beverly Keepers, Principal

Mike McDaniel

Mike McDaniel, Alumni Director



U.S. Senior Open

Table listing names and scores for the U.S. Senior Open. Column 1: Name; Column 2: Score. Includes names like Dave Stockton, Bob Charles, John Bland, etc.

Small table listing names and scores, possibly a continuation of the previous table or a different list.

SOCCER

MasterCard International Sister Cities Cup

At Shelby Campus and E.P. 'Tom' Sawyer Park (teams from Louisville unless noted)

BOYS
9-and-under - Javanon 1, Raiders (Springfield, Ill.) 1; Mockingbird 2, Terminators 2. Final - Javanon vs. Raiders, 2 p.m.
10s - Raiders (Springfield, Ill.) 2, Hotspur (Virginia Beach, Va.) 1; Louisville Soccer Club 4, Mockingbird 0; Untouchables (Owensboro) 1, Shaheen Football Club 0; Javanon 4, Attack (Memphis, Tenn.) 0; Raiders 4, LSC 0; Hotspur 2, Mockingbird 1; Untouchables 2, Javanon 1; Attack 2, Shaheen 1. Semifinals - Raiders vs. Javanon, 11 a.m.; Untouchables vs. Hotspurs, 11 a.m. Final - 4 p.m.
11s - Mockingbird 5, Porto Shengjin (Albania) 1; Classics (Cincinnati) 1, Javanon 1; Louisville Soccer Club 3, Storm (Nicholasville, Ky.) 0. Final - Classic vs. Javanon, 2 p.m.
12s - Saprissa (Costa Rica) 4, Wolverines (Warminster, Pa.) 0; Javanon 2, Sting (Jeffersonville) 0; Flame (Evansville) 2, Li-Nong (Taiwan) 0; Raiders (Springfield, Ill.) 2, Mockingbird 0. Semifinals - Noon. Final - 4 p.m.
13s - Hotshots (Cincinnati) 7, Storm (Wilmore, Ky.) 0; Javanon 1, Patriots (Taylor Mill, Ky.) 0; Classics (Cincinnati) 1, Lazars (Akron, Ohio) 0; Bon Air Thunder 2, Shaheen 1. Semifinals - Javanon vs. Thunder, 11 a.m.; Classics vs. Patriots, 11 a.m. Final - 4 p.m.
14s - Bon Air Thunder 1, Flyers (Fort Thomas, Ky.) 1; Click (Owensboro) 6, Fundesir (Columbia) 0; Javanon 0, Impact (Griffith, Ind.) 0. Final - Click vs. Impact, 4 p.m.
15s - F.C. 96 (Crystal Lake, Ill.) 1, Louisville Soccer Club 0; M.K. Hartford (Hartford, Wis.) 1, Flame (New Albany) 0; Kagisano (Soweto, South Africa) 4, Silver Bullets (Sterling Heights, Mich.) 2; Lightning (Valparaiso, Ind.) 3, Wings (Warminster, Pa.) 3; Javanon 6, Desperados (Owensboro) 1. Semifinals - F.C. 96 vs. Javanon, 9 a.m.; LSC vs. Kagisano, 9 a.m. Final - 4 p.m.
16s - Mockingbird 1, Flames (Elizabethtown) 1; Rangers (Troy, Ill.) 2, Elizanab 1; Real F.C. (Palatine, Ill.) 6, Louisville Soccer Club 1. Final - Real F.C. vs. Rangers, 2 p.m.
18s - Inferno (Indianapolis) winner.
19s - Real F.C. (Palatine, Ill.) 7, Team Louisville 2; Premier (Holland, Mich.) 2, Star (Roanoke, Va.) 1. Final - Real F.C. vs. Premier, 11 a.m.
Recreation Division: 10-and-under - OSC Strikers 3, Muhammad Ali All-Stars 1; Jaguars (Georgetown, Ind.) 1, Colts (Jeffersonton) 0; Muhammad Ali All-Stars 1, 1.



WIMBLEDON

WOMEN'S FINALISTS HEAD-TO-HEAD

(Tourn., surface, round, winner, score)
Steffi Graf vs. Arantxa Sanchez Vicario (Graf leads 27-8)
1988
United Jersey, hard, R16, Graf, 6-2, 6-0.
Family Circle Cup, clay, SF, Graf, 6-2, 6-4, Bausch and Lomb, clay, SF, Graf, 6-3, 6-2, French Open, clay, F, Sanchez Vicano, 7-6 (8-5), 3-6, 7-5.
Wimbledon, grass, QF, Graf, 7-5, 6-1.
1990
Pan Pacific, carpet, F, Graf, 6-1, 6-2.
Bausch and Lomb, clay, F, Graf, 6-1, 6-0.
Citizen Cup, clay, F, Graf, 5-7, 5-0, 6-1.
U.S. Open, hard, SF, Graf, 6-1, 6-2.
Lappegz, carpet, F, Graf, 6-1, 6-1.
1991
Lufthansa Cup, clay, F, Graf, 6-3, 4-6, 7-6 (8-5).
French Open, clay, SF, Sanchez Vicario, 6-0, 6-2.
1992
Bausch and Lomb, clay, SF, Graf, 6-7 (3-7), 6-4, 6-3.
Citizen Cup, clay, F, Graf, 7-6 (7-5), 6-2.
Lufthansa Cup, clay, F, Graf, 4-6, 7-5, 6-2.
French Open, clay, SF, Graf, 6-6, 6-2, 6-2.
Federation Cup, clay, R5, Graf, 6-4, 6-2.
U.S. Open, hard, QF, Sanchez Vicario, 7-6 (7-5), 6-3.
Slims of Philadelphia, carpet, F, Graf, 6-3, 3-6, 6-1.
1993
Australian Open, hard, SF, Graf, 7-5, 6-4.
Slims of Florida, hard, F, Graf, 6-4, 6-3.
Lipton, hard, F, Sanchez Vicario, 6-4, 3-6, 6-3.
Family Circle, clay, F, Graf, 7-6 (10-8), 6-1.
Citizen Cup, clay, F, Sanchez Vicario, 6-3, 6-3.
1994
San Diego, hard, F, Graf, 6-4, 4-6, 6-1.
Slims Championships, carpet, F, Graf, 6-4, 3-6, 6-1.
1994
Australian Open, hard, F, Graf, 6-0, 6-2.



AROUND KENTUCKIANA

Manual star Mansfield says she'll cast lot with Western

From Staff and Special Dispatches

Sharae Mansfield, a first-team Courier-Journal All-State selection last season as a junior at Manual High School, said yesterday she has made an oral commitment to attend Western Kentucky University.

"It was always Western for me," said Mansfield, a top candidate for 1997 Kentucky Miss Basketball who also considered Tennessee and Kentucky. "I just love the friendly atmosphere and the coaching staff."

Mansfield, who will sign a letter-of-intent in November, will become the eighth first-team C-J All-Stater to cast her lot with the Lady Toppers in the past four years. Five of the past seven Miss Basketballs have gone to Western.

"I can't wait to play with Laurie Townsend, Jaime Walz and Leslie Johnson," Mansfield said. "We could have an unbelievable team, hopefully good enough to win a ring."

The 6-foot-2 Mansfield averaged 20.1 points and 11.5 rebounds a game last season, and also had 145 blocked shots and 92 assists. The three-year starter has 1,200 career points.

Mansfield underwent a reconstruction of her left knee March 28. She said she's been lifting weights and soon will start on a running program.

"It feels pretty good," she said. "I just can't wait to start playing again in October. I want Miss Basketball really bad."

AAU basketball: Two Kentucky teams were ousted from the national 15-and-under Amateur Athletic Union Tournament at Kingsport, Tenn.

Fern Creek finished the tournament with a 5-3 record after beating a team from Virginia 66-64 in a losers' bracket game and then falling to Alabama Gold 71-58.

Against Virginia, forwards Justin Cornell (22 points) and Tracy Anderson (20) led the way for Fern Creek. Point guard Tony Davis sank 8 of 9 free throws in the fourth quarter to help Fern Creek hold on.

In the game with Alabama Gold, Fern Creek again was paced by Anderson (18 points) and Cornell (15). Northern Kentucky got a game-high 27 points from Derek Smith but lost 76-69 to the Tennessee Travelers in a losers' bracket game. The losers finished with a 4-3 record.

Northern Kentucky's Jared Lorenzen, who had averaged more than 20 points a game in the tourney, was held to 14.

Tennessee led 57-52 after three quarters when Vincent Yarbrough

GIRLS

11s - Indianapolis Soccer Academy 1, Javanon Jax 0; Glory (Covington, Ky.) 1, The Other Team (Lexington, Ky.) 0; Jax 2, The Other Team 1; ISA 1, Glory 0. Final - ISA vs. Glory, 4 p.m.
13s - Storm (Batavia, Ohio) 3, Tornado (Indianapolis) 0; Javanon Jammers 2, Yung Fu (Taiwan) 1; Inferno (Indianapolis) 7, Kentucky United 0; Javanon Jets 1, Lightning (Indianapolis) 0. Semifinals - Jammers vs. Jets, 11 a.m.; Inferno vs. Yung Fu, 11 a.m. Final - 4 p.m.
15s - Sting (Warminster, Pa.) 9, Kool Kickers (Okolona) 0; Puma (Indianapolis) 2, Lightning (Laurel Springs, N.J.) 0; Javanon Jaguars 2, Dynamite (Cincinnati) 1; Sting 3, Puma 0; Jaguars 5, Lightning 0; Dynamite 6, Kool Kickers 1. Final - Sting vs. Jaguars, 4 p.m.
18s - Louisville Soccer Club 3, Cyclones (Indianapolis) 0; Bon Air Lady Thunder 5, Courage (Ellicott City, Md.) 0; Steamers (Liburn, Ga.) 3, Juventus (Carbondale, Ill.) 1; Steamers 7, Courage 0; LSC 3, Juventus 2; Lady Thunder 1, Cyclones 1. Final - Lady Thunder vs. Louisville Soccer Club.
Recreation Division: 10-and-under - Net Surfers (Jeffersonton) 2, Kool Kickers 0. Final - Net Surfers vs. JEYSA (Jeffersonton).

(Thursday's results) BOYS

9s - Javanon 2, Mockingbird Valley 0; Raiders (Springfield, Ill.) 5, Terminators (Owensboro) 0; Mockingbird 2, Raiders 2; Javanon 5, Terminators 0.
10s - Raiders 2, Mockingbird 0; Hotspur (Virginia Beach, Va.) 3, Louisville Soccer Club 1; Untouchables (Owensboro) 1, Attack (Memphis, Tenn.) 0; Javanon 5, Shaheen Football Club 0.
11s - Storm (Nicholasville, Ky.) 3, Porto Shengjin (Albania) 1; Classics (Cincinnati) 1, Mockingbird 0; Javanon 2, LSC 1; Classic 5, Porto Shengjin 0; Mockingbird 3, LSC 2; Javanon 4, Storm 1.
12s - Javanon 1, Wolverines (Pa.) 0; Raiders (Springfield, Ill.) 1, Li-Nong (Taiwan) 1; Flame (Evansville) 4, Mockingbird 0; Wolverines 3, Sting (Jeffersonville) 2; Li-Nong 2, Mockingbird 1; Raiders 3, Flame 0.
13s - Hotshots (Cincinnati) 1, Javanon 0; Patriots (Taylor Mill, Ky.) 5, Storm (Wilmore, Ky.) 0; Classics (Cincinnati) 5, Bon Air Thunder 0; Lazars (Akron, Ohio) 3, Shaheen 2; Patriots 3, Hotshots 0; Javanon 6, Storm 0; Classics 5, Shaheen 2; Thunder 3, Lazars 2.
14s - Javanon 2, Click (Owensboro) 0; Flyers (Fort Thomas, Ky.) 5, Fundesir (Columbia) 3; Impact (Griffith, Ind.) 7, Bon Air Thunder 1; Impact 10, Fundesir 0; Click 1, Flyers 0; Javanon 0, Thunder 0.
15s - Louisville Soccer Club 3, Flame (New Albany) 1; F.C. 96 (Crystal Lake, Ill.) 1, M.K. Hartford (Hartford, Wis.) 0; Kagisano (Soweto, South Africa) 3, Lightning 0; Silver Bullets (Sterling Heights, Mich.) 5, Desperados (Owensboro) 1; Javanon 3, Wings (Warminster, Pa.) 0; LSC 2, M.K. Hartford 1; F.C. 96 2, Flame 0; Kagisano 6, Wings 0; Lightning 3, Desperados 0; Javanon 6, Silver Bullets 1.
16s - Javanon 3, Real F.C. (Palatine, Ill.) 2; Louisville Soccer Club 1, Flames (Elizabethtown) 0; Rangers (Troy, Ill.) 7, Mockingbird 0; LSC 3, Rangers 0; Real F.C. 2, Flames 0; Javanon 5, Mockingbird 0.
18s - Paradise (Barbados) 6, Force (Kokomo, Ind.) 0; Inferno (Indianapolis) 9, Mockingbird 0; Inferno 9, Paradise 0; Force 6, Mockingbird 1.
19s - Real F.C. (Palatine, Ill.) 5, Star (Roanoke, Va.) 1; Premier (Holland, Mich.) 3, Team Louisville 2; Team Louisville 4, Star 3; Premier 3, Real F.C. 0.
Recreation Division: 10s - Jaguars (Georgetown, Ind.) 6, Muhammad Ali All-Stars 0; Jeffersonton Colts 3, OSC Strikers 0. 12s - Jeffersonton Aces 8, Muhammad Ali All-Stars 0; Mockingbird 3, OSC Santos 2.
GIRLS
11s - Glory (Covington, Ky.) 1, Javanon Jax 0; Indianapolis Soccer Academy 2, The Other Team (Lexington, Ky.) 0.

13s - Lightning (Indianapolis) 2, Kentucky United 0; Javanon Jammers 5, Tornado (Indianapolis) 0.

Lady Tops turn focus to schedule, recruiting speed

By JASON FRAKES

The Daily News

Paul Sanderford greets a visitor in his office with a handshake and a warm smile. He seems calm, relaxed — a man at peace.

"I'm watching these games on TV, and it's killing me," said the Western Kentucky University women's basketball coach. "This isn't what I want to be doing this time of year. I watched the Auburn-Louisiana Tech game (Sunday), and Auburn was never in the game.

"We beat Louisiana Tech once and had a chance to beat them again. It just hurts when there's teams left playing that I know we're better than. ... The thing I'm most disappointed in is that I wasn't able to get this team to max out. Me and my staff didn't get this team to reach the potential I think it had."

Relaxed? Maybe. At peace? Not really.

What began as a season full of promise for the Lady Toppers crashed in the first round of the NCAA Tournament in Athens, Ga., on Friday. Seeded 10th in the West Region, Western dropped a 76-54 decision and finished its season with a 22-9 record.

But the coaching profession allows no time for sulking. Sanderford hit the road Monday for the National Junior College Athletic Association women's basketball tournament in Tyler, Texas. He goes seeking a solution for Western's most pressing problem this season.

"I'm looking for quickness," Sanderford said. "I think that's the thing we have to have next year."

And so three days after the Lady Toppers' season came to an end, the focus has already turned to the 1997-98 edition of the squad. Will Western, a team ranked in the top 10 of every preseason poll at the beginning of this season, be held up to those same standards next season?

Sanderford isn't sure, but he likes what he sees.

"I'm excited because I think we have a good nucleus coming back," Sanderford said. "We have to sit down and evaluate what they can do to get better over the summer. Maybe another year together is all that this team needs."

Here's a look at what next season holds in store:

Returns

The Lady Toppers will return all five starters from this season and seven of their top eight scorers. Leslie Johnson, Danielle McCulley

Lady Toppers roster

Seniors

ShaRonda Allen, 5-11/F (2.6 ppg, 2.1 rpg, 0.5 apg); Leslie Johnson, 6-1/C (15.6 ppg, 6.1 rpg, 1.3 apg); Danielle McCulley, 6-3/F (12.8 ppg, 8.7 rpg, 2.9 apg); Laurie Townsend, 5-7/G (9.1 ppg, 2.1 rpg, 2.6 apg).

Juniors

Kristi Hartley, 5-11/F (4.0 ppg, 2.7 rpg, 0.6 apg); Wendi Huisman, 6-4/C (1.5 ppg, 1.1 rpg, 0.1 apg); Shea Lunsford, 6-2/F (8.7 ppg, 5.8 rpg, 0.7 apg).

Sophomores

Jamie Britt, 5-9/G (4.2 ppg, 1.5 rpg, 0.9 apg); Jennifer McGinnis, 6-3/F (redshirt); Jaime Walz, 5-11/G (8.7 ppg, 3.0 rpg, 3.1 apg).

Freshmen

Rachel Byars, 6-1/F (20.0 ppg, 9.5 rpg); Sharae Mansfield, 6-2/F (18.8 ppg, 8.8 rpg, 5.0 apg); Natalie Powers, 5-10/G (24.0 ppg, 5.5 rpg, 5.0 apg).

Returning starters in bold; stats for freshmen from senior years in high school. Powers' team is still playing.

and Laurie Townsend were each All-Sun Belt Conference selections this year and will be counted on to provide senior leadership next season along with reserve ShaRonda Allen.

Jaime Walz had a streaky freshman season. Shea Lunsford was one of Western's more consistent players at the beginning of the season before coming down with mononucleosis and was never the same after coming back from her illness.

Jamie Britt and Kristi Hartley will join Allen as Western's top returnees off the bench. Wendi Huisman must add strength in order to become a major contributor.

The biggest question mark among the returnees is Jennifer McGinnis, a transfer from Duke who sat out the 1995-96 season because of transfer rules then played just three minutes this season and redshirted because of a back injury.

"It will be June before we find out anything about her," Sanderford said. "She's been out of basketball for two years now, but right now we're still hopeful. But really, who knows?"

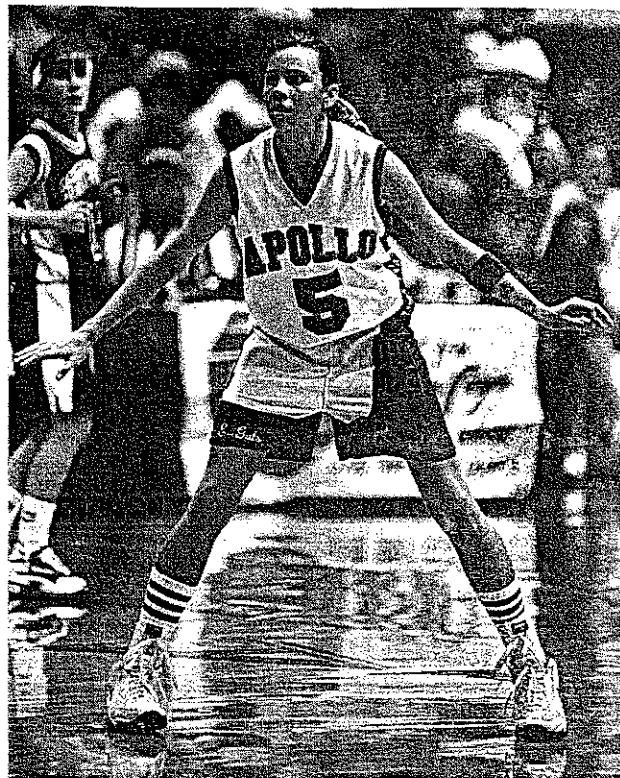
Johnson, Western's top scorer this season with 15.6 points an outing, said the summer will be important for her and her teammates.

"I know I still need to lose 20 or 25 more pounds," Johnson said. "Our guards need to get quicker and work on their ballhandling. Everybody has to evaluate how they can get better to make this team better."

Newcomers

Sanderford signed what he called "the top three seniors in Kentucky" during the early signing period in November. He expects all three to be able to contribute as freshmen next fall.

Six-foot-two post player Sharae Mansfield from Louisville's Manual High School is the most heralded of



Daily News/Joe Imel

Owensboro Apollo's Natalie Powers is one of three Lady Topper signees expected to make an impact for the team next season. Powers was a second-team all-state selection Monday. Lady Topper signees Sharae Mansfield and Rachel Byars were first-team selections. See Page 10A for more.

the trio. Rachel Byars, a 6-1 forward from Union County, will add a strong frontcourt player. Natalie Powers, a top Miss Basketball candidate from Owensboro Apollo, is a prototypical Sanderford point guard.

"Mansfield is super quick, and the other two have some quickness," Sanderford said.

Sanderford will look to fill his two remaining scholarship openings during the late signing period that begins April 9. NCAA rules prohibit Sanderford from commenting on recruits, but sources close to the program said Western is after several junior college players.

A pair of sophomores from Louisburg (N.C.) Junior College, where Sanderford coached six seasons before coming to Western, top that list. Bridget Howard, a 5-5 point guard who played her high school ball at Marshall County, and Keita Davis, a 6-0 forward, helped lead Louisburg to the national junior college tournament Sanderford will attend in Texas. Dick Vitale's *College Basketball* Preview said Davis "may be the most complete player in junior college hoops."

Former Lady Toppers Liesa Lang, Denise Hill and Tenisha Pinnix all signed with Western out of Louisburg.

Schedule

Sanderford will look to set several dates for next season's schedule when he visits with coaches in Texas this week. However, a few non-conference games have already been set.

Western will open its season in the Preseason Women's National Invitation Tournament. Sanderford said the 16-team field for the tournament will be announced after the Final Four.

The Lady Toppers will also play in an eight-team tournament in San Juan, Puerto Rico, on Nov. 28-30. DePaul, California, Duke, Louisiana State, Providence, Louisville and Southern Illinois are also tentatively scheduled to play in that tournament.

Home dates with Kentucky, Indiana, Northwestern and George Washington have been set, and Western will make return trips to Maine and Missouri-Kansas City. Sanderford said he is also negotiating with UCLA, Wisconsin, Kansas, North Carolina and Louisville.

"We're going to have a good schedule," Sanderford said. "We're going to make sure we have the schedule we need to have a good (Ratings Percentage Index) ranking."



Hilltopper **Sports** Information

Western Kentucky University



FOR IMMEDIATE RELEASE // April 20, 2001

Women's Basketball // Contact: Chris Masters, Assistant SID

ShaRAE MANSFIELD DRAFTED BY FOUR-TIME WNBA CHAMPION HOUSTON COMETS

All-America forward is second Lady Topper ever to be selected by U.S. pro league

BOWLING GREEN, Ky. — Western Kentucky University senior All-America forward **ShaRae Mansfield** (**Louisville, Ky./Manual HS**) was selected by the Houston Comets with the first pick of the third round (33rd overall) in the 2001 Women's National Basketball Association (WNBA) Draft, which was held Friday at the NBA Entertainment studios in Secaucus, N.J.

Mansfield is the first Lady Topper ever to be drafted by a WNBA team, and she is the second WKU player to be chosen by an American professional women's basketball league — **Danielle McCulley** was the first overall pick in the 1998 American Basketball League (ABL) draft by the Portland Power. Mansfield joins a Comets squad which has claimed the first four world championships in WNBA history, and features 2000 league Most Valuable Player **Sheryl Swoopes** and three-time Coach of the Year, **Van Chancellor**.

In addition, Mansfield will be the third Western player currently on a WNBA roster. Prior to last season, McCulley signed on as a free agent with the Indiana Fever, averaging 6.0 points and 2.8 rebounds in 29 games. **Shea (Lunsford) Mahoney**, who played at WKU from 1996-99, is set to begin her second campaign as a member of the New York Liberty, after posting 1.8 points and 2.0 rebounds per game in 15 contests a year ago.

A preseason All-America selection and the 2000-01 preseason Sun Belt Conference Player of the Year, Mansfield became the second player in school history, and the sixth Sun Belt athlete, to amass 1,000 points and 1,000 rebounds in her career, finishing second on both WKU charts with 1,804 points and 1,000 rebounds. She was also named to the all-Sun Belt team for the third consecutive season, making her the fifth player in school history to turn that trick. She leaves Western as one of two players to rank in the top 10 in 13 different career statistical categories — only the legendary **Lillie Mason** can also lay claim to that feat.

Houston is scheduled to play four preseason games, beginning Saturday, May 12, at 7:30 p.m. (CDT) against the Miami Sol at the Compaq Center in Houston. The WNBA will tip off its fifth season on Monday, May 28, Memorial Day, with a rematch of last year's Western Conference Finals between the Comets and the Los Angeles Sparks. The nationally-televised contest, also to be played at the Compaq Center, will air on NBC beginning at 2 p.m. (CDT).

— WKU —

Office of Sports Information / Room 152 / E.A. Diddle Arena
Western Kentucky University / 1 Big Red Way / Bowling Green, Ky. 42101
Telephone — (270) 745-4298 / FAX — (270) 745-3444 / e-mail — sports.information@wku.edu
Hilltopper Athletics on the Internet — www.wkusports.com

• 1997-98 Lady Toppers •

45

SHARAE MANSFIELD

• Freshman • 6-2 • Forward
• Louisville, Ky. • Manual High School



The Mansfield Preview

ShaRae Mansfield joins the Lady Topper program after a highly successful prep career at Manual High School in Louisville.

- Averaged 18 points as a senior, leading the Lady Crimsons of Manual High School to a 26-3 record.
- Joined fellow Lady Topper newcomers Rachel Byars and Natalie Powers as a starter on the Kentucky All-Star squad.
- Selected as the Kentucky Gatorade Player-of-the-Year.

- Also named to the *Parade Magazine* Third Team All-America team.
- Voted as a 1996 Preseason Second Team All-American by *Street & Smith*.
- A *Courier-Journal* All-State selection as a junior and senior.
- Described as a tremendous athlete as well as a strong student.
- Selected to numerous all-district, all-region and all-state teams.
- An Honorable Mention pick by *USA Today* in 1997.
- Named the all-tournament team at the Louisville Invitational Tournament as a junior.
- Averaged 20.1 points, 11.5 rebounds and 7.0 assists per game as a junior, while also collecting 145 total blocks and 92 assists.
- Led the Lady Crimsons to a 20-11 record and a runner-up finish in the region as a junior.
- Coached by Kenny Smith for three years and Mina Todd for one year at Manual High School. Former Lady Topper Michelle Clark (1986-90) was an assistant coach under Coach Smith, while former Lady Topper Gwen

Doyle (1994-95) was a Manual High assistant coach under Coach Todd last season.

- Played on a partially torn ACL of the left knee during her sophomore season, but still managed to lead the team in scoring and rebounding.

Up Close

- Born Oct. 5, 1978, in Louisville, Ky., she is the daughter of Jerry and Pamela Williams.
- Lists her greatest sports thrill to date as signing to play with the Lady Toppers.
- Despite her tremendous athletic talent, basketball was not her first consideration when she chose to attend WKU. As a corporate and organizational communication major, Western's academic reputation in that field was her top priority.
- Her future plans include playing professional basketball and owning her own business.

COURTSIDE with ShaRae

- **My dream job ...**
President of my own company
- **Motto I try to live by ...**
The key to happiness is having dreams. The key to success is to make your dreams come true.
- **The most impressive thing about Coach Small ...**
His ability to speak to his players.
- **Besides basketball, my favorite sports to watch ...**
Football and tennis
- **In preseason training I worked on ...**
Getting myself mentally tough.
- **My favorite food ...**
Pizza and hamburgers
- **Three words that describe me ...**
Spirited, happy, determined
- **I chose my jersey number because ...**
45 is my lucky number
- **To get psyched up for a game, I ...**
Play and listen to calm music
- **My hobbies include ...**
writing, music, singing, drawing
- **What I like most about Lady Topper basketball ...**
The family atmosphere
- **What I like most about WKU ...**
It's close to home and I have a lot of friends here
- **My favorite professional team ...**
Houston Comets of the WNBA

5

NATALIE POWERS

• Freshman • 5-11 • Guard
• Owensboro, Ky. • Apollo High School



The Powers Preview

Natalie Powers became the second player in three years from Apollo High School in Owensboro to sign with the Lady Toppers, following Laurie Townsend who joined the squad in 1994. She left AHS as the all-time leading scorer (boys and girls) with 2,497 career points, breaking previous records held by Rex Chapman and Townsend.

- Powers posted career averages of 18.8 points, 5.1 rebounds and 4.2 assists per game.
- As a senior, Powers shot 53 percent from the field and 80 percent from the free throw line.
- Led Apollo to the Sweet Sixteen three years,

reaching the semifinals during her senior season. She earned Sweet Sixteen all-tournament team honors three times.

- Played 133 games at AHS, starting as a freshman and not missing a game all four years.
- A four-time all-city, all-district and all-region selection.
- Named to the AAU all-state tournament team as a freshman.
- Voted the MVP of the Regional Tournament as a sophomore.
- The AHS team captain the last two years, she was selected as the team's Most Valuable Player three times.
- Selected as a Kentucky Junior All-Star following the 1995-96 season.
- The MVP of the 1996 Lady Invitational of the South.
- An Honorable Mention All-America pick by *Street & Smith* and *USA Today*.
- A starting member of the 1997 Kentucky All-Star squad.
- 1997 Third Region Player of the Year.

COURTSIDE with Natalie

- **My dream job ...**
College basketball coach
- **Motto I try to live by ...**
"A man is a hero not because he is braver than anyone else, but because he is brave for ten minutes longer."
- **The most impressive thing about Coach Small ...**
He treats his players like a family
- **In preseason training I worked on ...**
Conditioning
- **My favorite food ...**
Seafood
- **Three words that describe me ...**
Competitive, hard-working, sincere
- **I chose my jersey number because ...**
My older brother wore No. 5
- **To get psyched up for a game, I ...**
Picture myself in game situations
- **My hobbies include ...**
Going out with my friends
- **My advice to kids ...**
Set goals, work hard and be consistent in everything you do.
- **My most prized possession ...**
My family
- **I would like to play one-on-one with ...**
John Stockton
- **Besides basketball, my favorite sport to play**
Golf

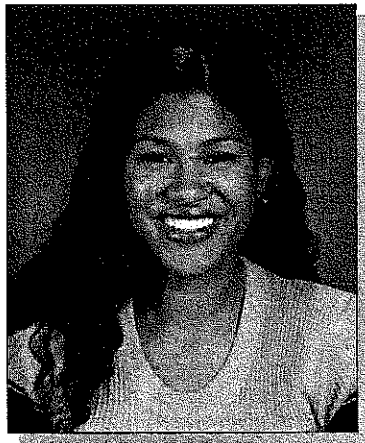
- Scored a career-high 38 points against Monroe County as a senior.
- Scored over 20 points in a single game 63 times.
- Holds Apollo season records for steals (103) and double-doubles(8), and career records for field goals (815), free throws (672), assists (560), steals (349), three-pointers made (195):
- The only player in school history to post two triple-doubles. She scored 20 points and posted 10 rebounds and 10 assists vs. West Hopkins (2-9-95). She topped that performance with 25 points, 10 assists and 10 steals against Daviess County (12-21-95).
- Coached by Willis McClure at Apollo High.

Up Close

- A four-time member of the All-State Academic Team, she was a member of the Beta Club and the National Honor Society.
- Received the AHS Most Athletic Award.
- A student-council representative.
- An Army Reserve Scholar Athlete.
- Served as sports editor of her high school newspaper.
- Born July 24, 1979, in Owensboro, Ky., she is the daughter of Ron and Jan Powers. Ron is a high school biology teacher and Jan is an elementary school teacher.

ShaRAE MANSFIELD

Sophomore • 6-2 • Forward • Louisville, Ky. (Manual High School)



•45•

1997-98 (As a Freshman)

ShaRae Mansfield made an impressive start to her Western Kentucky career as the top newcomer on the squad. She saw action in all 35 Lady Topper games, averaging 5.1 points, 3.9 rebounds and 11.7 minutes per game.

1997-98 GAME-BY-GAME STATISTICS

Opponent	Pts.	Reb.	A	B	S
Louisville	7	9	1	1	0
New Mexico	2	3	1	1	0
Nebraska	2	3	0	1	0
Northwestern	4	5	0	0	0
Northwestern	6	9	2	1	0
Long Beach State	10	5	0	0	1
Texas Tech	2	1	0	0	0
Indiana	2	3	1	0	0
Oregon	2	1	0	0	1
Kentucky	1	2	0	0	0
Miami (Ohio)	6	4	0	1	0
North Carolina	6	4	0	0	0
Xavier	0	1	0	0	0
Arkansas State	8	3	0	2	0
G. Washington	13	9	1	1	0
South Alabama	8	4	2	1	0
Wisconsin	2	3	0	1	0
UTPA	13	7	0	1	3
USL	6	5	1	1	2
Arkansas State	3	4	1	1	0
Louisiana Tech	0	2	1	0	0
Maine	7	4	0	0	3
USL	9	3	0	1	1
New Orleans	0	1	0	1	1
Louisiana Tech	6	4	0	0	0
Lamar	6	4	1	1	0
South Alabama	8	3	1	1	1
UTPA	2	4	0	1	1
Lamar	15	6	1	1	2
Arkansas State	2	4	0	0	0
Louisiana Tech	2	2	0	0	1
Stephen R. Austin	0	1	0	0	0
Tennessee	2	6	2	0	0

- ShaRae was one of the first off the bench for the Lady Toppers, averaging 5.4 points and 3.9 rebounds per game.
- Set a career high with a game-high 15 points against Lamar at the Sun Belt Conference Tournament
- Totaled two blocks at Lamar. Ranked second on the team with 23 blocks.
- Tallied six points, five rebounds and two steals vs. Southwestern Louisiana.
- Turned in a career night vs. George Washington with 13 points and nine rebounds.
- Named 1997-98 WKU Rookie-of-the-Year.
- Scored 10 points against Long Beach State.
- Recorded eight points and two blocks against Arkansas State.

Looking Back

- Averaged 18 points as a senior, leading Manual High School to a 26-3 record.
- A 1997 Kentucky All-Star.
- Named All-America third team by *Parade Magazine*.
- An Honorable Mention pick by *USA Today*.
- Selected as the 1997 Kentucky Gatorade Player-of-the-Year.
- A *Courier-Journal* All-State selection following her junior and senior seasons.
- Averaged 20.1 points, 11.5 rebounds and seven assists per game as a junior, while also collecting 145 blocks and 92 steals.
- A 1996 Preseason All-American second team selection.

In Depth

- Born Oct. 5, 1978, in Louisville, Ky., she is the daughter of Jerry and Pamela Williams.
- Majoring in corporate and organizational communications at Western.

KEY NUMBERS

1997-98: 5.1 ppg, 3.9 rpg

CAREER HIGHS

Pts:	15 vs. Lamar (3-5-98)
Rebs:	9, sev., last vs. GW (1-6-98)
FGs:	7 vs. Lamar (3-5-98)
FGA:	10 vs. Lamar (2-14-98)
FTs:	7 vs. UTPA (1-15-98)
FTA:	8 vs. UTPA (1-15-98)
AST:	2, sev., last vs. Lamar (2-14-98)
STLs:	3 vs. UTPA (1-15-98)
BLK:	2, twice, last vs. Lamar (2-14-98)
MINs:	17, twice, last vs. GW (1-16-98)

COURTSIDE WITH ShaRAE

My goals this season:

To academically and athletically accomplish more than I did last year.

During the offseason I worked on:
Dribbling skills.

Most memorable athletic event:

Playing in the NCAA Tournament.

Motto I try to live by:

Accept the things you can't change and change the things you can.

Nickname:

Ray Ray

My most prized possessions:

My dogs, Lexus and Cinnamon.

If I won the lottery, I would:

Open a store: "Clothing for Tall Women."

What I like most about Coach Small:

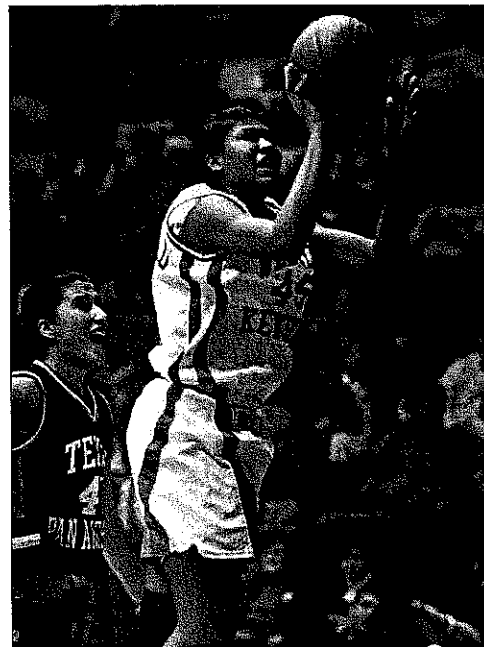
His positive attitude.

Favorites:

Place on Campus - Diddle Arena

Pro Player - Cynthia Cooper

Food - Chili



THE MANSFIELD REPORT

"ShaRae had a tremendous freshman year at Western Kentucky, and she learned a lot about the college game and how she can contribute to this team. She has added, quickness and strength to her game. That, along with her year of experience, will allow her to blossom and become a household name in Bowling Green. She is a well-rounded person, giving it her all in class and on the court. She really has it all together." — Coach Small

CAREER TOTALS

Year	G-GS	Min- Avg	FG- A	Pct	3P-A	Pct	FT-A	Pct	Off-Def	Tot- Avg	PF-FD	AT	TO	BS	ST	Pts- Avg
'97-98	35-1	410-11.7	71-137	.518	1-1	1.000	37-61	.607	61-77	138-3.9	64-1	19	25	23	18	180-5.1

• SEASON OUTLOOK •

Western Hopes Experience Means Return to National Spotlight

Experience. Coaches will say there's no substitute for it. In the case of the 1999-2000 Western Kentucky women's basketball team, there's a whole lot of experience. Thanks to a myriad of injuries, eight Lady Toppers on this year's roster have seen significant playing time at the college level. That experience should prove valuable for Western as it embarks on another traditionally-rugged season.

Tough on the Blocks

Despite losing leading scorer and rebounder Shea Lunsford to graduation, the Lady Toppers should once again be strong on the blocks. Junior **ShaRae Mansfield** (Louisville, Ky.) became one of the Sun Belt Conference's top front-line players in 1998-99, earning a spot on the All-SBC Team and picking up two conference Player of the Week awards. The 6-2 forward was second on the team in scoring (14.7 ppg) and rebounding (8.1 rpg) and placed in the top 10 in the Sun Belt in scoring (6th), rebounding (4th), field goal percentage (2nd - .573) and blocked shots (4th - 1.18 bpg). Mansfield started all but two games for the Lady Toppers last season, scoring in double figures 25 times, including a career-high 24 points against New Orleans. She also nearly pulled off Western's first-ever 20-20 game, finishing with 20 points and 18 rebounds against South Alabama.

The Lady Toppers also will have the element of size in the low post with the addition of sophomore **Kenosha Chastang** (Columbus, Ohio). The 6-4 center sat out last season after transferring from Pittsburgh. In her one season with the Panthers, Chastang averaged 5.5 points and 3.9 rebounds, dropping in a career-high 21 points against Boston College.

Chastang, and 6-3 sophomore **Katie Wulf** (Bloomington, Ill.), who saw limited action for the Lady Toppers last year, will compete for the starting center spot this season.

Guards Will Be Key for WKU

The backcourt will be Western's biggest strength, with as many as five players poised to crack the starting lineup at one of the two guard slots.

Senior **Jaime Walz** (Ft. Thomas, Ky.) missed the final six weeks of last season with a torn ACL, but should give the Lady Toppers some punch on the perimeter. Walz started 14 of 16 games last year, averaging 7.2 points and 3.3 assists per game, while connecting on a team-best 16 three-pointers. Her best game last season came at Vanderbilt, where she set no less than six career highs, including five three-pointers, in the Lady Toppers' overtime win.

Walz's classmate, **Jamie Britt** (Bowling Green, Ky.) will lend veteran leadership to the Western backcourt. A winner of WKU's Sixth Woman Award last season, Britt started eight times late in the year in place of Walz, averaging 7.7 points and 3.9 rebounds per game. Britt also is noted for her uncanny accuracy at the free throw line, where she ranked third in the Sun Belt with an .824 mark a year ago.

Challenging Walz and Britt for the starting spots in the backcourt will be a trio of young guns. Sophomore **Kristina Covington** (Elizabethtown, Ky.) shook off a slow start to become the 1999

Sun Belt Conference Freshman-of-the-Year, the first Lady Topper ever to be so honored. She also earned WKU Rookie-of-the-Year laurels after averaging 3.7 ppg and 2.2 rpg while playing all 28 games for Western.

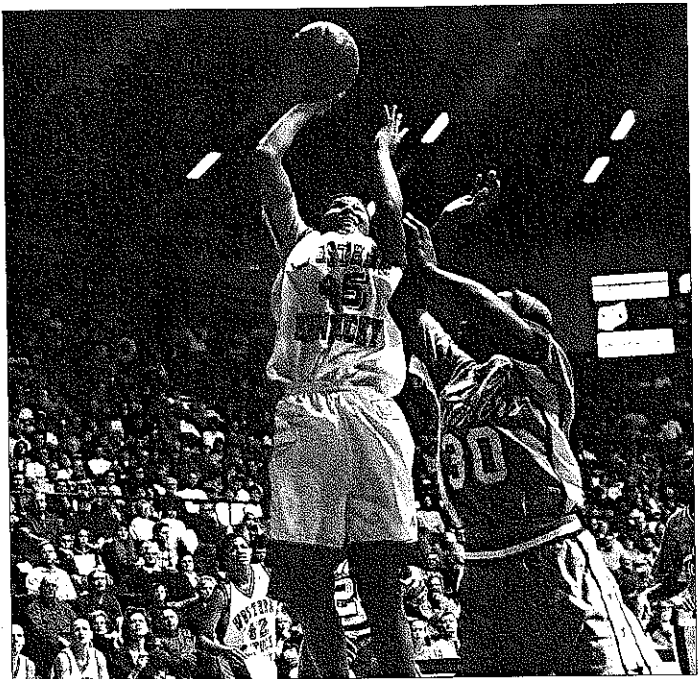
Sophomore **Natalie Powers** (Owensboro, Ky.) redshirted last season while recovering from a stress fracture in her leg. A talented defender and shooter, Powers has averaged 2.2 ppg while playing in just 23 games in her abbreviated Lady Topper career. Her quickness and ability to move without the ball will make her an important option for WKU this year.

Junior **LaVonda Johnson** (Bowling Green, Ky.) has been a valuable asset in the backcourt for Western over the last two seasons. Despite missing 10 games last year with a stress fracture in her leg, Johnson averaged 2.4 ppg in 17 contests, playing primarily as a backup point guard. Her talent in running the Lady Topper offense will be key in ensuring Western's success in 1999-2000.

Newcomers Will Add Depth

The Lady Toppers will benefit from some new blood in the program, with four new faces on the roster this season.

Jennifer Slaughter gives Western yet another legitimate threat on the perimeter. A two-time all-honorable mention all-state guard at Edmonson County High School in Brownsville, Ky., Slaughter completed her prep career as the second-highest scorer in ECFS history with 1,567 points (14.5 ppg). She led the state with a .446 three-point field goal percentage as a



1998-99 All-Sun Belt Conference pick
ShaRae Mansfield

junior and placed in the top 10 in Kentucky in free throw percentage (.803) and three-point field goals (61) as a senior.

Freshman **Elisha Ford** and sophomore **Jana Wright** both have been given invitations to walk on to the Lady Topper squad this season. Ford was a four-year letterwinner at Lebanon (Tenn.) High School, earning all-district honors last year. Wright averaged 8.0 points and 5.0 rebounds during her senior season at Centennial High School in Franklin, Tenn.

A Demanding Schedule Awaits

As always, the Lady Toppers have put together a difficult schedule which features some of the nation's best programs. Western will face teams from six of the top seven conferences in the country, highlighted by matchups against SEC powers Vanderbilt and Kentucky. WKU travels to nationally-ranked Oregon (of the Pac-10) in the first week of the season, and tournaments at SEC stalwart Florida and Big 12 member Missouri also dot the non-conference schedule.

Perennial national contender Louisiana Tech and last year's Sun Belt Conference runner-up Florida International head up a strong league docket. During the course of the year, Western will play eight games against NCAA Tournament teams, with nearly half of its games (13) coming against teams which reached the postseason in 1998-99.

ShaRAE MANSFIELD

6'2" • Junior • Forward • Louisville, Ky. (Manual)

45



1998-99 (As a Sophomore): Mansfield became one of the Sun Belt Conference's top players last season, starting 26 of 28 games for the Lady Toppers, ranking second on the team in scoring (14.7 ppg) and rebounding (8.1 rpg)... ranked fourth in the Sun Belt in rebounding and blocked shots (1.18 bpg) and sixth in scoring... led the team and ranked second in the SBC with a .573 field goal percentage... an all-conference selection in addition to winning the WKU Coaches Award... was named Sun Belt Player-of-the-Week on Jan. 18 and Feb. 27; she was the first sophomore to earn multiple conference player of the week awards since Lamar's Lara Webb in 1996... was tapped as WKU Player-of-the-Game six times... scored in double figures in 23 games in 1998-99 (including her last 20) and posted the first six double-doubles of her career... scored 19 points and grabbed 10 rebounds vs. Austin Peay Nov. 19... put together back-to-back double-doubles against Big Ten powers Northwestern (15 pts, 11 rebs) and Wisconsin (22 pts, 16 rebs)... scored a career-best 24 points and pulled down 10 rebounds vs. New Orleans Jan. 15... recorded 21 points and eight rebounds in 25 minutes of action vs. Belmont Feb. 8... notched a career-best four steals at New Orleans Feb. 13... scored a game-high 18 points at Louisiana Tech Feb. 20... nearly became Western's first 20-20 player with 20 points and a career-high 18 rebounds vs. USA Feb. 27... was almost perfect from the field, going 9-for-10, scoring 23 points, grabbing 12 rebounds and notching a career-high five blocks against South Alabama in the quarterfinals of the Sun Belt Tournament March 4.

1997-98 (As a Freshman): Mansfield made an impressive start to her Western Kentucky career as the top newcomer on the squad; she saw action in all 35 Lady Topper games, averaging 5.1 points, 3.9 rebounds and 11.7 minutes per game... was one of the first players off the bench for the Lady Toppers, averaging 5.4 points and 3.9 rebounds per game... named 1997-98 WKU Rookie-of-the-Year... set a then-career high with a game-high 15 points against Lamar at the Sun Belt Conference Tournament... totaled two blocks at Lamar, and ranked second on the team with 23 blocks... tallied six points, five rebounds and two steals vs. Southwestern Louisiana... turned in a career night vs. George Washington with 13 points and nine rebounds... scored 10 points against Long Beach State... recorded eight points and two blocks against Arkansas State.

Looking Back: Averaged 18 points as a senior, leading Manual High School to a 26-3 record... a 1997 Kentucky All-Star... named to *Parade Magazine* All-America team... an honorable mention All-America pick by *USA Today*... selected as the 1997 Kentucky Gatorade Player-of-the-Year... a Louisville *Courier-Journal* All-State selection following her junior and senior seasons... averaged 20.1 points, 11.5 rebounds and seven assists per game as a junior, while also collecting 145 blocks and 92 steals... a 1996 preseason All-America second team selection.

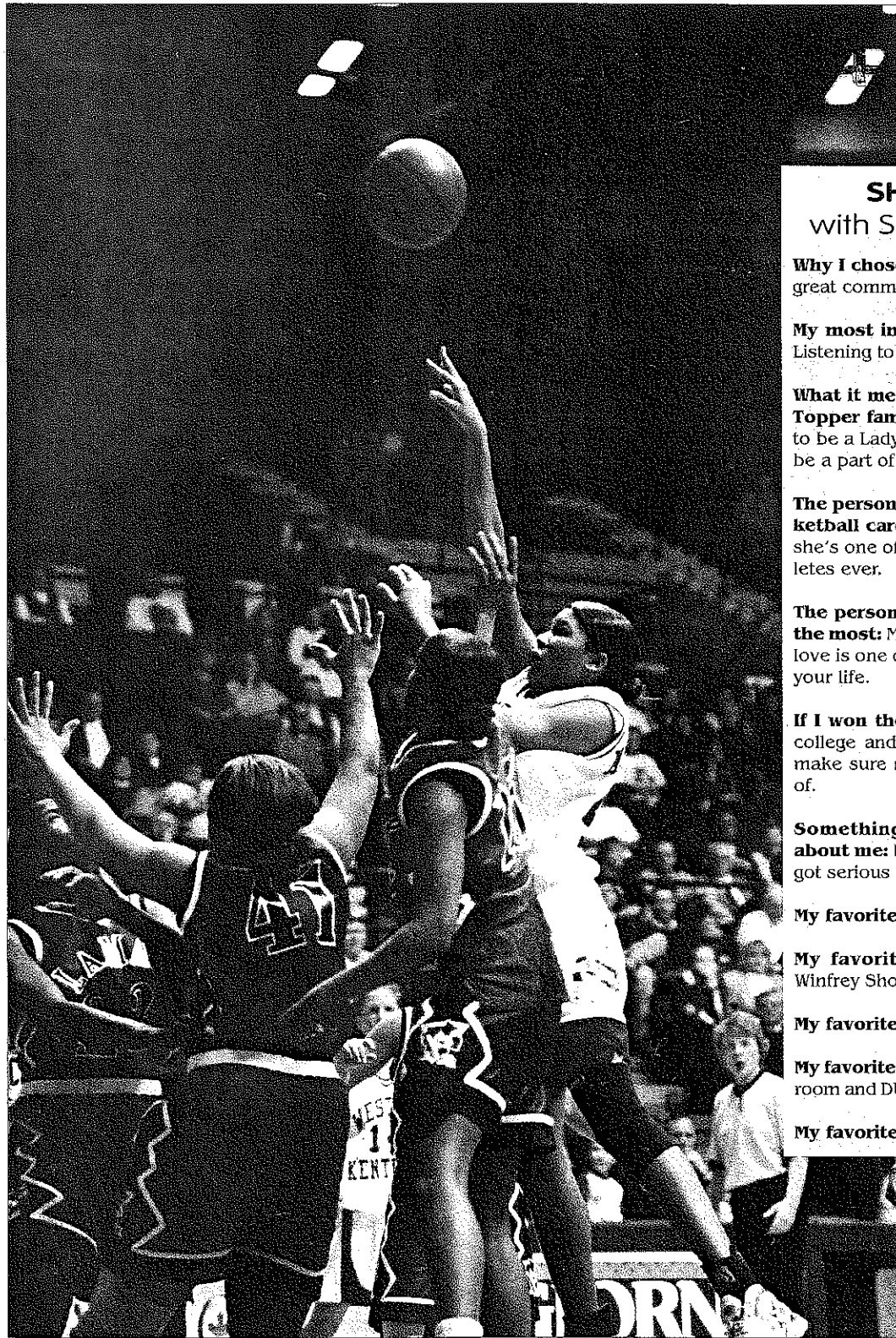
In Depth: Born Oct. 5, 1978, in Louisville, Ky., she is the daughter of Jerry and Pamela Williams... majoring in corporate and organizational communications at Western Kentucky.

Mansfield's Career Highs

Points	24, vs. New Orleans, 1-13-99
FGM	11, vs. Wisconsin, 12-10-98
FGA	16, twice
3FGM	1, vs. New Orleans, 2-16-98
3FGA	1, vs. New Orleans, 2-16-98
FTM	7, vs. Belmont, 2-8-99
FTA	9, twice
Rebs	18, vs. South Alabama, 2-27-99
Asst	5, vs. Fla. International, 2-18-99
Blk	5, vs. South Alabama, 3-4-99
Steals	4, at New Orleans, 2-13-99
Min	36, at Louisiana Tech, 2-20-99

Mansfield's Career Stats

Year	G-GS	Min-Avg	FG-A	Pct	3P-A	Pct	FT-A	Pct	Off-Def	Tot-Avg	PF-FD	AT	TO	BS	ST	Pts-Avg
'97-98	35-1	410-11.7	71-137	.518	1-1	1.000	37-61	.607	61-77	138-3.9	64-1	19	25	23	18	180-5.1
'98-99	28-26	799-28.5	172-300	.573	0-0	.000	67-96	.698	100-126	226-8.1	89-1	38	80	33	30	411-14.7
Career	63-27	1209-19.2	243-437	.566	1-1	1.000	104-157	.662	161-203	364-5.8	153-2	57	105	56	48	591-9.4



SHORT SHOTS with ShaRae Mansfield

Why I chose Western Kentucky: It has a great communications program.

My most important pre-game ritual is: Listening to slow music.

What it means to be a part of the Lady Topper family: It means the world to me to be a Lady Topper. It's been an honor to be a part of such a great tradition.

The person who has influenced my basketball career the most: Cheryl Miller — she's one of the most talented female athletes ever.

The person who has influenced my life the most: My mother, who showed me that love is one of the most important things in your life.

If I won the lottery, I would: Still go to college and play basketball, and I'd also make sure my family was well taken care of.

Something people might not know about me: I wanted to be an artist before I got serious about basketball.

My favorite food is: Hot sauce.

My favorite TV show is: "The Oprah Winfrey Show."

My favorite movie is: "The Wood."

My favorite place on campus is: My dorm room and DUC (Downing University Center).

My favorite color is: black.

Mansfield in the Postseason

Tourn.	G-GS	Min- Avg	FG- A	Pct	3P-A	Pct	FT-A	Pct	Reb.-Avg.	PF-FD	AT	TO	BS	ST	Pts- Avg
SBC	5-2	102-20.4	23-30	.767	0-0	.000	8-12	.667	31-6.2	12-0	3	8	7	5	54-10.8
NCAA	2-0	20-10.0	1-5	.200	0-0	.000	0-0	.000	7-3.5	4-0	2	1	1	0	2-1.0
Totals	7-2	122-17.4	24-35	.686	0-0	.000	8-12	.667	38-5.4	16-0	5	9	8	5	56-8.0

2000-01 SEASON OUTLOOK

Lady Toppers Seek Right Blend to Maintain Their Level of Excellence

According to the old saying, the more things change, the more they stay the same. The Western Kentucky University women's basketball team hopes that such a mixture of old and new will help continue the program's rich history of success in 2000-01.

With seven letterwinners and three starters back from last season's NCAA Tournament squad, there's a lot that remains familiar about the Lady Toppers. But, at the same time, six newcomers arrive on the scene this year, lending a sense of freshness and renewal to a team which has recorded four consecutive 20-win seasons and has reached the NCAA Tournament in 14 of the last 16 years.

Undoubtedly, the most recognizable face in a Western uniform will be pre-season first-team All-America forward **ShaRAE Mansfield**. The 6-2 senior from Louisville led the Sun Belt Conference in scoring (18.5 ppg), rebounding (10.6 rpg) and field goal percentage (55.6%), and was one of only four players to appear in the final NCAA rankings in all three categories. A two-time all-conference selection, Mansfield was second in the nation last year with 22 double-doubles and she became just the second player in school history to average a double-double for an entire season.

A unanimous all-conference selection and three-time Sun Belt Player of the Week in 1999-2000, Mansfield will look to extend two streaks this season. She has scored in double figures in 56 consecutive games, and she owns an impressive string of 95 consecutive games played, having not missed a contest in three years on the Hill.

Aside from Mansfield, the WKU post offense will be largely untested. Junior center **Katie Wulf** is the only other returning player to have logged time on the blocks, although a pair of talented newcomers will jockey with her for a spot in the starting lineup.

Standing 6-2, both junior college transfer **Aja Brown** and freshman **Leah Lineberry** add height to a Lady Topper roster which had just three players over six feet tall last season. Hailing from Bronx, N.Y., Brown averaged 10 points and eight rebounds per game at Middle Georgia College, and was an all-city and all-borough selection in 1998 at Manhattan Center High School. Meanwhile, Lineberry, a Calvert City, Ky., native, tallied 16.1 points and seven rebounds per game as a senior at Marshall County High School, earning second-team all-state honors.

Once again this season, the Lady Topper backcourt should be especially deep, with up to six players ready to step into starting roles. One player who will figure significantly into Western's plans is junior guard **Natalie Powers**. The 5-11 Owensboro, Ky., product emerged as one of the top young talents in the Sun Belt last season, averaging 10.5 ppg and 4.2 rpg while earning all-SBC Tournament honors. She started 30 games a year ago, scoring in double figures 18 times and finishing second on the team with 39 three-pointers made. She also ranked second in the league (and 28th in the nation) shooting 84.2% from the free throw line, the third-best mark in school history.

The other WKU senior, **LaVonda Johnson** appeared to have the inside track to the other guard position. However, she suffered a torn anterior cruciate ligament (ACL) in her right knee during a pick-up game in August and will miss the entire 2000-01 season. Johnson took over the starting point guard responsibilities two months into the 1999-2000 season and guided the Lady Toppers to a 17-5 record when she was at the helm. The 5-6 native of Bowling Green averaged a career-high 6.3 ppg and 3.3 rpg last year, scoring in double figures seven times.

With the injury to Johnson, redshirt sophomore **Kristina Covington** should see increased playing time this season. The

Elizabethtown, Ky., native returns to the floor after missing nearly all of the 1999-2000 season with a torn ACL in her left knee. She was the 1999 Sun Belt Freshman of the Year after averaging 3.7 points and 2.2 rebounds per game.

A pair of highly-regarded freshmen will also look to make an impact at the guard position this season. **Jamie Truitt**, a 5-10 native of Owensboro, Ky., and **Camryn Whitaker**, a 5-8 product from Cynthia, Ky., both were honorable mention All-America picks by *USA Today* and each played on the Kentucky All-Star Team. Truitt, a three-time all-state selection from Apollo High School, averaged 21.9 points, 8.3 rebounds, 3.8 assists and 3.4 steals per game, while setting a school record with 300 career three-pointers.

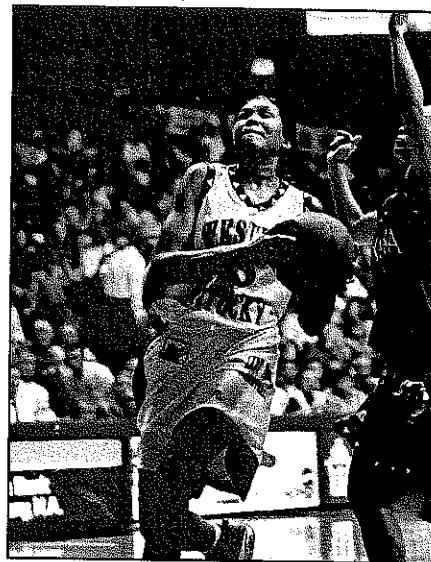
Whitaker, a 2000 all-state honoree, averaged 23.2 points and 7.3 assists per game while leading Harrison County High School to its first-ever state tournament appearance. She also became the second player in state high school history to finish with 2,000 career points and 1,000 career assists (joining former Lady Topper great **Jaime Walz**).

Two other incoming freshmen, **Danika Cox** (Jeffersonville, Ky.) and **Lindsay Preston** (Bowling Green, Ky.), will also battle for playing time in the Lady Topper backcourt. Cox was a 2000 all-state selection and ranked among the state's top scorers with 19.7 points per game at Montgomery County High School. Preston is coming off a one-year hiatus after undergoing surgery last fall to repair a torn ACL in her right knee. She was a third-team all-state selection in 1999 at Warren East High School.

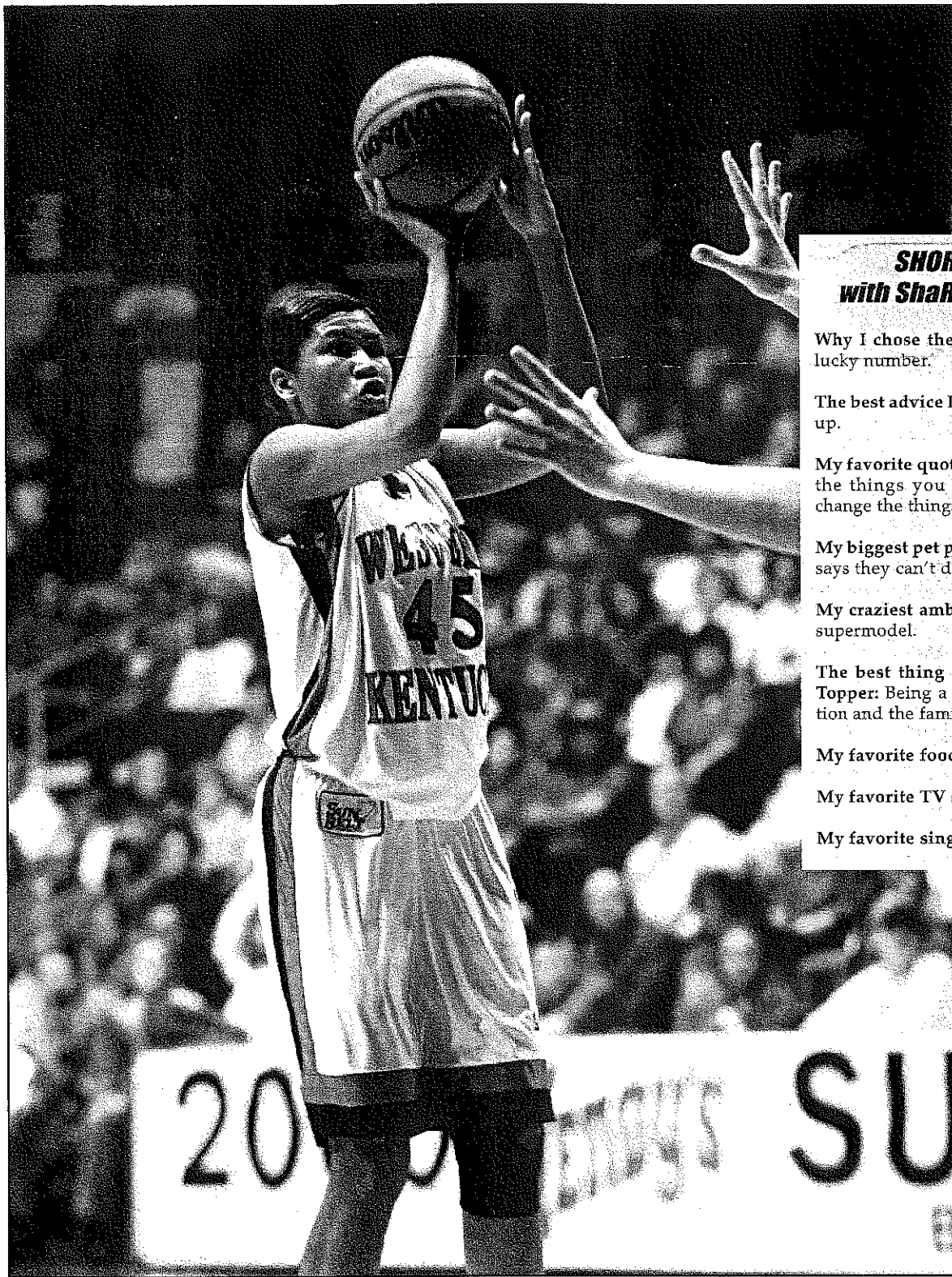
On the heels of last season's difficult schedule, which ranked 36th in the nation, the Lady Toppers have put together a strong docket for the 2000-01 campaign. A total of 10 opponents reached the postseason last year, with six making it to the 2000 NCAA Tournament. In addition, WKU will play 12 teams which finished in the top 100 of last year's final Ratings Percentage Index (RPI).

Of Western's first 11 games this season, eight will come against teams which qualified for the postseason a year ago. The Lady Toppers will open at the Hawaiian Regent Classic Nov. 17-19 in Honolulu, a tournament which features NCAA participant Pepperdine and WNIT qualifier Hawaii.

Perennial top-10 power Louisiana Tech, two-time WNIT selection Arkansas State, and Florida International figure to be Western's main Sun Belt Conference rivals as the league splits in two divisions for the first time in its history. Three new schools, Middle Tennessee, New Mexico State and North Texas also join the Sun Belt this season, which should add to the parity in the nation's eighth-toughest conference.



ShaRAE MANSFIELD
2000-2001 Street & Smith's
Preseason All-American



SHORT SHOTS
with ShaRae Mansfield

Why I chose the number 45: It's my lucky number.

The best advice I ever got: Never give up.

My favorite quote to live by: "Accept the things you cannot change and change the things you can."

My biggest pet peeve: When a person says they can't do something.

My craziest ambition: I want to be a supermodel.

The best thing about being a Lady Topper: Being a part of a great tradition and the family atmosphere.

My favorite food: Buffalo wings.

My favorite TV show: "Song Soul."

My favorite singer: Brian McKnight.

Mansfield in the Postseason

Tourn.	G-GS	Min-Avg	FG-A	Pct	3P-A	Pct	FT-A	Pct	Reb-Avg	PF-FD	A	TO	BS	ST	Pts-Avg
Sun Belt	8-4	208-26.0	46-66	.697	0-0	.000	21-26	.808	63-7.9	19-0	5	20	12	8	113-14.1
NCAA	4-2	93-23.3	17-35	.486	0-0	.000	6-8	.750	30-7.5	11-0	5	4	1	1	40-10.0
Totals	12-6	301-25.1	63-101	.624	0-0	.000	27-34	.794	93-7.8	30-0	10	24	13	9	153-12.8



ShaRae Mansfield — 45

6-2 • Senior • Forward • Louisville, Ky. • Manual H.S.

2000-01 (As a Senior): Mansfield is unquestionably one of the top five post players in the country ... a preseason first-team All-America selection by *Street & Smith's* ... she has the opportunity to become only the second-player in school history and sixth player in Sun Belt Conference an-

nals to record 1,000 career points and 1,000 career rebounds ... she enters this year with two amazing streaks — has scored in double figures in 56 consecutive games, and has not missed a game in three years at WKU (a string of 95 games) ... a two-time all-conference pick and five-time SBC Player of the Week.

Summer 2000: Mansfield participated in the United States R. William Jones Cup Team Trials, held in conjunction with USA Basketball's Summer Development Camp in Colorado Springs, Colo.

1999-2000 (As a Junior): Mansfield was named a third-team All-American by the *Women's Basketball News Service* and an honorable mention All-American by *Basketball Times* ... she was a unanimous selection to all-Sun Belt Conference team, and was named Sun Belt Player of the Week three times (Jan. 31, Feb. 7 and Feb. 21) ... she was also chosen as WKU's Most Valuable Player ... Mansfield led the team and conference, and was ranked nationally in scoring (18.5 ppg), rebounding (10.6 rpg) and field-goal percentage (.556) — she was one of only four players nationwide to appear in the final NCAA statistical report in all three categories ... she also ranked in top 10 in the Sun Belt in seven different categories ... Mansfield set single-season school records for points scored by a junior (593) and rebounds (339) ... she became only the second player in school history (after Shea Lunsford) to average a double-double for an entire season ... she placed second in the nation with 22 double-doubles, including 15 in her final 19 games ... Mansfield was named to all-tournament teams at Unilever Lady Tiger Classic, State Farm Classic and Sun Belt Tournament, the first all-tournament selections of her career ... she scored a career-high 26 points at Kentucky Dec. 1 ... At New Orleans (Jan. 29), she grabbed a career-best 19 rebounds and posted the second-best free throw percentage ever in a Sun Belt game, going 11-for-11.

1998-99 (As a Sophomore): Mansfield blossomed into one of the Sun Belt Conference's top players, starting 26 of 28 games for the Lady Toppers, ranking second on the team in scoring (14.7 ppg) and rebounding (8.1 rpg) ... ranked fourth in the Sun Belt in rebounding and blocked shots (1.18 bpg) and sixth in scoring ... led the team and ranked second in the SBC with a .573 field-goal percentage ... an all-conference selection in addition to winning the WKU Coaches' Award ... was named Sun Belt Player of the Week on Jan. 18 and Feb. 27; she was the first sophomore to earn multiple conference player-of-the-week awards since Lamar's Lara Webb in 1996 ... was tapped as WKU

ShaRae Mansfield's Career Highs

Points	26, at Kentucky, 12-1-99
Rebounds	19, at New Orleans, 1-29-00
Assists	5, twice (last: vs. Florida International, 2-5-00)
Blocked Shots	5, vs. South Alabama, 3-4-99
Steals	4, twice (last: at New Orleans, 1-29-00)
Minutes Played	40, vs. Louisiana Tech, 3-11-00
FG Made	11, twice (last: at Florida, 12-28-99)
FG Attempts	20, at Florida, 12-28-99
3-Pt. FG Made	1, vs. New Orleans, 2-16-98
3-Pt. FG Attempts	1, vs. New Orleans, 2-16-98
FT Made	11, at New Orleans, 1-29-00
FT Attempts	11, three times (last: vs. Louisiana-Lafayette, 3-9-00)

Player of the Game six times ... scored in double figures in 23 games in 1998-99 (including her last 20) and posted the first six double-doubles of her career ... scored 19 points and grabbed 10 rebounds vs. Austin Peay Nov. 19 ... put together back-to-back double-doubles against Big Ten powers Northwestern (13 pts, 11 rebs) and Wisconsin (22 pts, 16 rebs) ... scored a (then) career-best 24 points and pulled down 10 rebounds vs. New Orleans Jan. 13 ... recorded 21 points and eight rebounds in 25 minutes of action vs. Belmont Feb. 8 ... notched a career-best four steals at New Orleans Feb. 13 ... scored a game-high 18 points at Louisiana Tech Feb. 20 ... nearly became Western's first 20-20 player with 20 points and a (then) career-high 18 rebounds vs. South Alabama Feb. 27 ... was almost perfect from the field, going 9-for-10, scoring 23 points, grabbing 12 rebounds and notching a career-high five blocks against South Alabama in the quarterfinals of the SBC Tournament March 4.

1997-98 (As a Freshman): Mansfield made an impressive start to her Western Kentucky career as the top newcomer on the squad; she saw action in all 35 Lady Topper games, averaging 5.1 points, 3.9 rebounds and 11.7 minutes per game ... named WKU Rookie of the Year ... set a (then) career-high with a game-high 15 points against Lamar at the Sun Belt Tournament ... totaled two blocks at Lamar Feb. 21, and ranked second on the team with 23 blocks ... tallied six points, five rebounds and two steals vs. Southwestern Louisiana on Jan. 17 ... stood out in Jan. 6 game vs. George Washington with 13 points and nine rebounds ... scored 10 points against Long Beach State Nov. 28.

High School: Averaged 18 ppg as a senior, leading Manual High School to a 26-3 record ... a 1997 Kentucky All-Star ... named to 1997 *Parade Magazine* All-America team ... an honorable mention All-America pick by *USA Today* ... selected as the 1997 Kentucky Gatorade Player of the Year ... a Louisville *Courier-Journal* all-state selection following her junior and senior seasons ... averaged 20.1 points, 11.5 rebounds and seven assists per game as a junior, while also collecting 145 blocks and 92 steals ... a 1996 preseason All-America choice.

Personal: Born Oct. 5, 1978, in Louisville, Ky., she is the daughter of Jerry and Pamela Williams ... majoring in corporate and organizational communications at Western Kentucky.

Mansfield's Career Stats

Year	G-GS	Min-Avg	FG-A	Pct	3P-A	Pct	FT-A	Pct	Off-Def	Tot-Avg	PF-FD	A	TO	BS	ST	Pts-Avg
'97-98	35-1	410-11.7	71-137	.518	1-1	1.000	37-61	.607	61-77	138-3.9	64-1	19	25	23	18	180-5.1
'98-99	28-26	799-28.5	172-300	.573	0-0	.000	67-96	.698	100-126	226-8.1	89-1	38	80	33	30	411-14.7
'99-00	32-32	1110-34.7	224-403	.556	0-0	.000	145-185	.784	130-209	339-10.6	82-2	47	109	46	39	593-18.5
Career	95-59	2319-24.4	467-840	.556	1-1	1.000	249-342	.728	291-412	703-7.4	235-4	104	214	102	87	1184-12.5

A Dream Come True

Western Kentucky head coach Steve Small wouldn't argue with the old adage, "Better lucky than good." According to Small, good fortune is the main reason that stellar junior forward ShaRae Mansfield is a Lady Topper.

"ShaRae was a lucky recruit," said Small, who was a WKU assistant under Paul Sanderford when Mansfield committed in 1997. "We definitely knew that she was a great, great athlete, and we were just lucky that she had loved Western all of her life."

Mansfield, a 6-2 native of Louisville, Ky., certainly had options following her fantastic career at Manual High School. As a prep senior, she tallied 18 points per game on her way to *Parade* magazine All-America status.

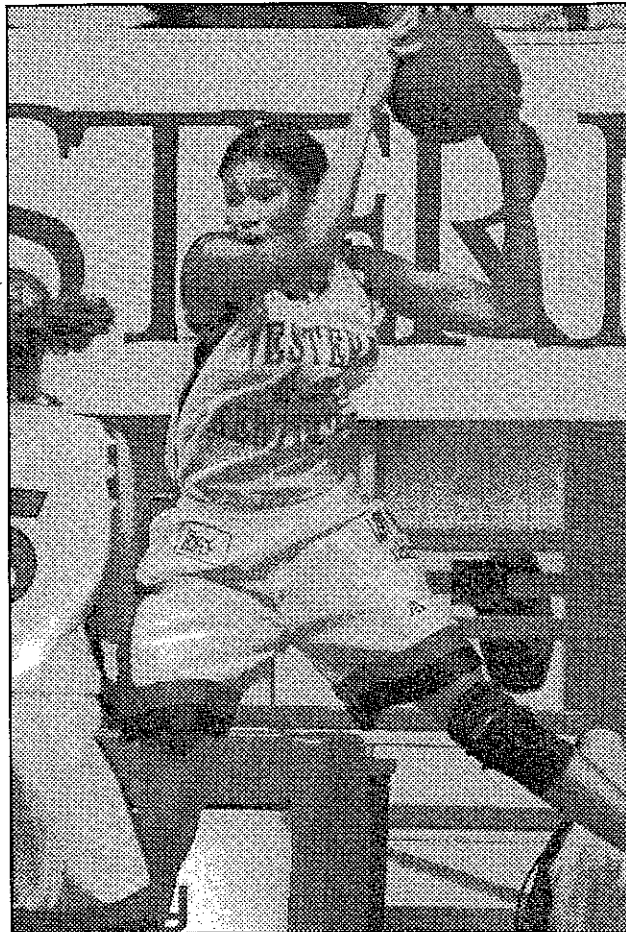
Colleges from across the country contacted Mansfield before she narrowed her list to two schools — her dream team, and the nation's dream program.

"It came down to Tennessee and Western Kentucky, but I think that I always knew in the back of my mind that I wanted to go to Western," she remembered. "Growing up, you hear so much about Tennessee. You hear about Western too, but not like you hear about Tennessee."

"I had always liked Western, and then I fell in love with the place when I made my visit. I really liked the people and the atmosphere, and they have a great communications program here."

Western Kentucky also has a tremendous women's basketball tradition, but the Lady Toppers haven't had too many recruits who were as talented as Mansfield.

"She is the best all-around basketball player that I've had the privilege to coach, and I've been coaching here for 16 years," Small said. "I've been able to coach players like Clemette Haskins and Lillie Mason, and ShaRae is right there with them."



ShaRae Mansfield has one key goal this year — she wants to lead Western Kentucky back into the NCAA Tournament in 2000.

claim. Through 24 games, she was contributing 18.5 points, 10.0 rebounds and 1.5 blocked shots per game, and she had led the Lady Toppers to a 16-8 record.

"ShaRae has everything — speed, an outside jumper, she's quick to the basket, and she is a great rebounder," Small said. "What really separates her, though, is her great work ethic. When you have a great athlete with a great work ethic, they are just going to get better and better."

"ShaRae puts her whole heart into everything she does. She's relentless, because that's the only way she knows. Plus, she really doesn't care who gets the recognition. She would be happy if she didn't score a single point for seven or eight games as long as the team won."

Mansfield's work ethic, and her high level of play, naturally lifted her into a

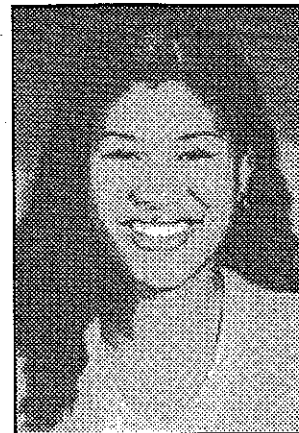
"We have a young team, and we only have two seniors, so all the older players need to help with leadership," she said. "I mostly lead by my actions because I'm usually a quiet player, but I'll say something on the court if I think I need to."

Mansfield is now one of the program's mentors. Two years ago, she was a student who carefully watched All-American Leslie Johnson.

"I talked to Leslie a lot when I was a freshman," Mansfield said. "She would tell me things like not to force shots, and that you should just let the game come to you. Leslie told me that if I really wanted to make something happen, I should try to do it with my rebounding."

"I learned a lot from Leslie, and those lessons are paying off now."

Johnson wasn't Mansfield's only guide in Bowling Green. When Coach Sanderford



before Mansfield's freshman year, she wasn't worried. She had confidence in Small, and she hasn't been disappointed.

"It's been exciting, because you never know what to expect. He's not a normal coach," Mansfield laughed. "He is a great motivator, and he's hilarious."

Mansfield came off the bench as a freshman, and she averaged 5.1 points and 3.9 rebounds per outing although she was only playing 11.7 minutes per game. The following year, Mansfield stepped into the starting lineup and stepped up her production. She delivered 14.7 points and 8.1 rebounds per game while connecting on 57.3 percent of her field goal attempts.

Mansfield was an all-Sun Belt Conference selection in 1998-99, but the season ended on a sour note. Although the Lady Toppers had an impressive 21-7 record, they were not invited to the NCAA Tournament. It marked just the second time in the 1990s that WKU was left out of the field for The Big Dance. Mansfield and her teammates are now working hard to ensure that they start the new century on the right foot.

"Things are going really good now. The more games we play, the more we're playing as a team," Mansfield said. "I think our future is bright. This team is going to surprise some people."

"We really want to make it to the NCAA Tournament this year. When we missed the tournament last year, it was shocking. That really hurt us."

WKU opponents have been feeling most of the pain this season.

Louisian
Westerr
Denver
Florida I
New Or
Arkansa
Louisiar
Arkansa
South A

Scoring
ShaRae
Betty Le
Julie Ha
Gergane
Muci Ha

Reboun
ShaRae
Michael
Gergane
Jessica
Tanisha

Tenness
Middle 1
Murray
Tenness
Eastern
Austin F
Southe
Tenness
Eastern
Morehe

Georgia
Florida
Campbe
Samforc



45

ShaRae MANSFIELD

6-2 • Senior • Forward • Louisville, Ky. (Manual HS)

2000-01 Season Averages

Games played (started)	32 (32)
Points/game	19.4
Rebounds/game	9.3
Assists/game	1.1
Steals/game	1.3
Blocks/game	1.0
Turnovers/game	2.5
Assist/turnover ratio	0.45
Field goal percentage	49.9
3-point percentage	00.0
Free throw percentage	77.8

2000-01 Season Highs

Points	33, vs. SW Missouri State, 1-29-01
Rebounds	16, twice
Assists	3, twice
Blocks	5, at Tennessee Tech, 12-4-00
Steals	3, four times
Minutes	41, at Miami (Fla.), 1-21-01
FGM	12, vs. New Orleans, 2-6-01
FGA	20, at Tennessee Tech, 12-4-00
3FGM	None
3FGA	1, twice
FTM	14*, vs. Louisville, 11-30-00
FTA	16, vs. Louisville, 11-30-00

Career Highs

Points	33, vs. SW Missouri State, 1-29-01
Rebounds	19, at New Orleans, 1-29-00
Assists	5, twice
Blocks	5, twice
Steals	4, twice
Minutes	41, at Miami (Fla.), 1-21-01
FGM	12, vs. New Orleans, 2-6-01
FGA	20, twice
3FGM	1, vs. New Orleans, 2-16-98
3FGA	1, three times
FTM	14*, vs. Louisville, 11-30-00
FTA	16, vs. Louisville, 11-30-00

* E.A. Diddle Arena record

THIS SEASON

- ❑ Became second player in school history (and sixth in Sun Belt Conference history) to record 1,000 points and 1,000 rebounds in her career — finished with 1,804 points and 1,000 rebounds after plucking her 1,000th career rebound in WKU's loss to Ohio State in WNIT quarterfinals March 20.
- ❑ One of just two players in Lady Topper history to rank in the top 10 in 13 different statistical categories (joining the legendary **Lillie Mason**).
- ❑ Named all-Sun Belt for third consecutive year, becoming the fifth Lady Topper to make three all-league squads (and the fourth to do so in consecutive seasons).
- ❑ Chosen 2000-01 preseason Sun Belt Player of the Year
- ❑ Also a 2000-01 preseason All-America pick by *Street & Smith's* (1st team), *Women's Basketball Journal* (4th team) and *Associated Press* (honorable mention).
- ❑ Started 32 games this season, averaging 19.4 points and 9.3 rebounds per game — her scoring average was the fourth-best single-season total in school history.
- ❑ Ranked among league leaders in seven categories (scoring, rebounding, field goal percentage, free throw percentage, blocked shots, offensive rebounds and defensive rebounds) — ranked in top 40 in nation in scoring all season long (ended postseason tied for 33rd).
- ❑ Recorded team-high 14 double-doubles this season — had 36 double-dips in her final two years at WKU.
- ❑ Scored in double figures in her last 88 games at Western, dating back to Nov. 22, 1998.
- ❑ Posted game-high scoring honors nine times and top rebounding laurels 14 times this year.
- ❑ Topped 30 points three times this season, becoming first Lady Topper in 20 years (and second in school history) to pull off that feat.
- ❑ Earned sixth Wilson Sun Belt Player-of-the-Week award of her career on Feb. 12, becoming third player in league history to win weekly honor six times.
- ❑ Picked for 2000 Hawaiian Regent Classic all-tournament team, the fourth selection of her career.
- ❑ Booked career-high 33 points in upset of #13 Southwest Missouri State Jan. 29.
- ❑ Missed first (and only) game of college career Dec. 18 at South Florida while recovering from knee surgery — ended streak of 104 consecutive games played, but still saw action in 127 of a possible 128 games in her career.

Mansfield's Postseason Statistics

Tourn.	G-GS	Min-Avg	FG-A	Pct	3P-A	Pct	FT-A	Pct	Off-Def	Tot-Avg	PF-FD	A	TO	BS	ST	Pts-Avg
Sun Belt	10-6	268-26.8	62-94	.660	0-0	.000	24-33	.727	31-50	81-8.1	23-0	8	23	13	9	148-14.8
NCAA	4-2	93-23.3	17-35	.486	0-0	.000	6-8	.750	12-18	30-7.5	11-0	5	4	1	1	40-10.0
WNIT	3-3	117-39.0	30-50	.600	0-0	.000	9-14	.643	7-22	29-9.7	6-0	5	3	4	3	69-23.0
Totals	17-11	478-28.1	109-179	.609	0-0	.000	39-55	.709	50-90	140-8.2	40-0	18	30	18	13	257-15.1

Mansfield's Career Statistics

Year	G-GS	Min-Avg	FG-A	Pct	3P-A	Pct	FT-A	Pct	Off-Def	Tot-Avg	PF-FD	A	TO	BS	ST	Pts-Avg
'97-98	35-1	410-11.7	71-137	.518	1-1	1.000	37-61	.607	61-77	138-3.9	64-1	19	25	23	18	180-5.1
'98-99	28-26	799-28.5	172-300	.573	0-0	.000	67-96	.698	100-126	226-8.1	89-1	38	80	33	30	411-14.7
'99-00	32-32	1110-34.7	224-403	.556	0-0	.000	145-185	.784	130-209	339-10.6	82-2	47	109	46	39	593-18.5
'00-01	32-32	1130-35.3	233-467	.499	0-2	.000	154-198	.778	108-189	297-9.3	85-0	36	80	31	43	620-19.4
Career	127-91	3449-27.2	700-1307	.536	1-3	.333	403-540	.746	399-601	1000-7.9	320-4	140	294	133	130	1804-14.2



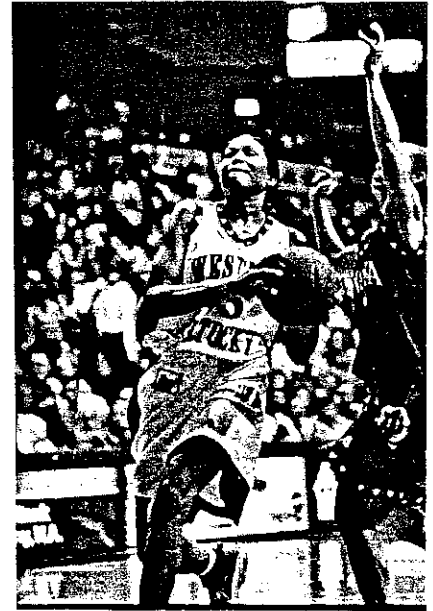
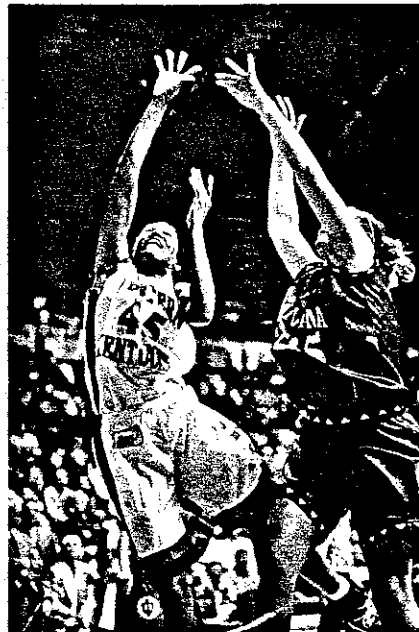
1999-2000 All-America Candidate

ShaRAE MANSFIELD

Western Kentucky University

#45

6-2
Junior
Forward
Louisville, Ky.



- The premier post player for Western Kentucky in each of the last two years, ranking among the Sun Belt leaders in scoring, rebounding and field goal percentage in 1998-99, and again this season.
- Leads the 1999-2000 Lady Toppers with 18.2 points per game, 9.4 rebounds per game, and a .526 field goal percentage. Also boasts a .750 free throw percentage.
- Has compiled 6 double-doubles in 9 games as a junior, reaching the 20-point plateau four times (against Indiana, Oregon, Kentucky, and Florida), and the 10-rebound level 6 times.
- Leads the Sun Belt and ranks 35th in the nation in scoring this season (as of Dec. 13) at 18.2 points per game.
- Posted three of her top four scoring efforts this year on the road against nationally-ranked opponents (career-high 26 points at Kentucky, 22 points at Florida and 21 points at Oregon).
 - Has scored in double figures in 33 consecutive games and 34 of her last 37 contests.
 - WKU schedule ranked 26th in the nation according to the WBCA/Summerville Index.
 - Was second on 1998-99 Lady Topper squad with 14.7 points per game and 8.1 rebounds per game.
 - Led the team with a .573 field goal percentage, the sixth-highest figure in Lady Topper history.
 - Rang up six double-doubles as a sophomore, topping 20 points six times and 10 rebounds six times.
 - Set a Sun Belt Tournament record with .833 field goal percentage in the Lady Toppers' two games in 1999.
 - Against South Alabama (Feb. 27, 1999), Mansfield grabbed a career-high 18 rebounds, tying for the third-highest total in school history.
 - 1999 State Farm Classic All-Tournament Team.
 - 1999 Unilever Missouri Lady Tiger Classic All-Tournament Team.
 - 1999-2000 preseason All-Sun Belt Conference selection (unanimous).
 - 1999 All-Sun Belt Conference selection.
 - 1998 Western Kentucky Rookie of the Year.
 - Two-time Sun Belt Conference Player of the Week.
 - 1997 Kentucky Gatorade High School Player of the Year.
 - 1997 *Parade Magazine* and *USA Today* High School All-American.
 - Two-time Kentucky High School All-State selection (1996-1997).

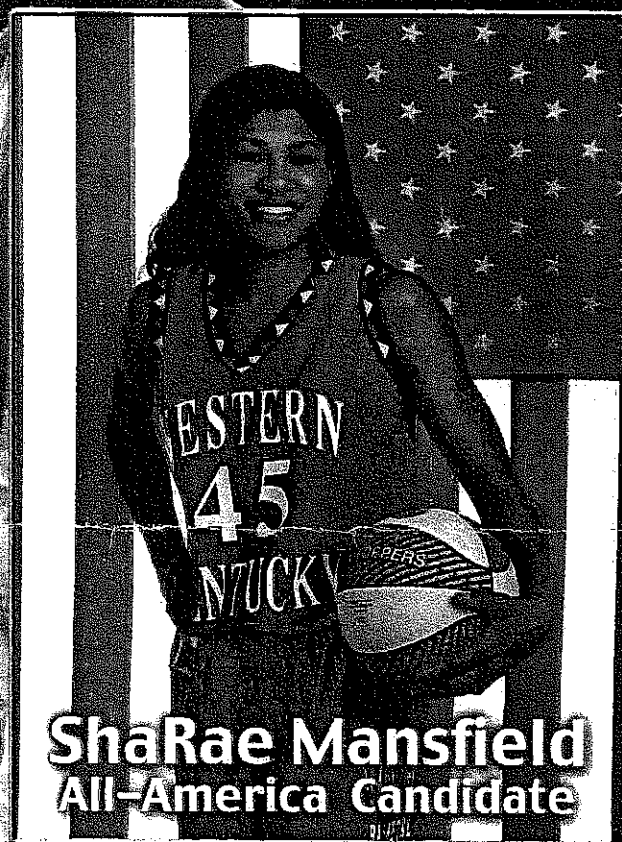
MANSFIELD'S CAREER STATISTICS (as of Jan. 1, 2000)

Year	G-GS	Min- Avg	FG- A	Pct	3P-A	Pct	FT-A	Pct	Off-Def	Tot- Avg	PF-FD	A	TO	BS	ST	Pts- Avg.
'97-98	35-1	410-11.7	71-137	.518	1-1	1.000	37-61	.607	61-77	138-3.9	64-1	19	25	23	18	180-5.1
'98-99	28-26	799-28.5	172-300	.573	0-0	.000	67-96	.698	100-126	226-8.1	89-1	38	80	33	30	411-14.7
<u>'99-00</u>	<u>9-9</u>	<u>315-35.0</u>	<u>61-116</u>	<u>.526</u>	<u>0-0</u>	<u>.000</u>	<u>42-56</u>	<u>.750</u>	<u>38-47</u>	<u>85-9.4</u>	<u>26-2</u>	<u>8</u>	<u>30</u>	<u>11</u>	<u>9</u>	<u>164-18.2</u>
Totals	72-36	1523-21.2	304-553	.550	1-1	1.000	146-213	.685	199-250	449-6.2	179-4	65	135	67	57	755-10.5

SHARAE MANSFIELD

western kentucky university

- Has scored in double figures in 43 consecutive games
- Sun Belt Top Ten in 7 categories
- Top scorer in Sun Belt (18.7 ppg)
- Top rebounder in Sun Belt (10.2 rpg)
- Twelve double-doubles this year
- Ten 20-point games this year
- Twelve 10-rebound games this year
- Three-time Sun Belt Conference Player of the Week



ShaRae Mansfield
All-America Candidate

WESTERN KENTUCKY UNIVERSITY

Mansfield's Game-by-Game Stats*



Opponent	Field Goal %	Rebounds	Points
Indiana	.615	12	24
#17 at Oregon	.533	10	21
at Tennessee Tech	.538	10	16
at Kentucky	.529	6	26
vs Evansville	.400	13	18
at Missouri	.500	6	13
Murray State	.444	11	11
at Florida	.550	10	22
vs Maine	.667	7	13
Vanderbilt	.571	9	21
#25 at Arkansas State	.357	11	16
at Florida International	.625	8	10
Miami (FL)	.412	5	15
Louisiana-Lafayette	.750	11	21
Arkansas State	.667	12	25
at Denver	.545	6	20
#3 Louisiana Tech	.412	17	17
at South Alabama	.700	10	22
at New Orleans	.639	19	25

Mansfield's Career Highs*

	1999-2000 Season High	Career High
Points	26, at Kentucky, 12-1-99	Same
Field Goals Made	11, at Florida, 12-28-99	11, twice
Field Goal Attempts	10, at Florida, 12-28-99	Same
3-Point Field Goals Made	None	1, vs New Orleans, 2-16-98
3-Point Field Goal Attempts	None	1, vs New Orleans, 2-16-98
Free Throws Made	11, at New Orleans, 1-29-00	Same
Free Throw Attempts	11, twice	Same
Rebounds	19, at New Orleans, 1-29-00	Same
Assists	4, at South Alabama, 1-27-00	5, vs FL International, 2-18-99
Blocks	4, vs Vanderbilt, 1-2-00	5, vs South Alabama, 3-4-99
Steals	4, at New Orleans, 1-29-00	4, twice
Minutes	39, three times	Same

Mansfield's Career Statistics*

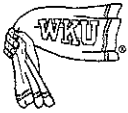
Year	G-GS	Min-Avg	FG-A	Pct	3P-A	Pct	FT-A	Pct	Off-Def	Tot-Avg	PF-FO	A	TO	BS	ST	Pts-Avg
97-98	35-1	41.0-11.7	71-137	.518	1-1	1.000	37-61	.607	61-77	138-3.9	64-1	19	25	23	18	18.0-5.1
98-99	28-26	7.99-28.5	172-300	.573	0-0	.000	67-96	.698	100-126	226-8.1	89-1	38	80	33	30	41.1-14.7
99-00	19-19	6.73-35.4	137-245	.539	0-0	.000	92-113	.814	82-111	192-10.2	49-2	26	69	28	25	35.6-18.7
Totals	82-46	1,882-23	375-682	.550	1-1	1.000	196-270	.726	243-314	557-6.8	202-4	83	174	84	73	94.7-11.5

*as of Feb. 1, 2000

SHARAE MANSFIELD

6-2 • Junior • Forward
 Louisville, KY • Manual High School

ALL-AMERICA CANDIDATE



Hilltopper **Sports** Information



Western Kentucky University

For Immediate Release // Jan. 18, 1999

Women's Basketball // Contact: Chris Masters, assistant SID

Mansfield Named Sun Belt Conference Player of the Week

BOWLING GREEN, Ky. -- Western Kentucky center ShaRae Mansfield (So., Louisville, Ky.) has been named the *Wilson* Sun Belt Player of the Week, it was announced Monday. It's the first time the Manual High School graduate has won the conference's highest weekly honor and it marks the third time this season a Lady Topper has garnered the award. Forward Shea Lunsford won back-to-back Sun Belt Player of the Week laurels on Nov. 30 and Dec. 7, 1998. The last time Western players won the honor three times in one season was 1994-95, when Tara Cosby claimed two awards and Gwen Doyle won it once.

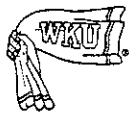
Mansfield averaged 19.5 points and 8.5 rebounds per game in two games last week, leading Western Kentucky to wins over New Orleans and Southwestern Louisiana. She posted a career-high 24 points and grabbed 10 rebounds for her fourth career double-double in Western's 95-73 victory over New Orleans on Jan. 13. Three days later, she scored a game-high 15 points and pulled down seven rebounds to help the Lady Toppers defeat USL, 73-59. Mansfield also was an extremely accurate shooter last week, hitting 53.8 percent (14-26) from the field and 84.6 percent (11-13) from the free throw line.

For the season, Mansfield ranks sixth in the Sun Belt in scoring (14.4 ppg), fourth in rebounding (8.0 rpg), fourth in field goal percentage (.573) and fifth in blocked shots (0.81 bpg). Her numbers are even better in conference games, where Mansfield ranks second in scoring (19.0 ppg), third in rebounding (8.3 rpg), third in field goal percentage (.583) and fifth in blocked shots (1.00 bpg).

Western Kentucky (13-3, 2-1 Sun Belt) returns to action Saturday (Jan. 23) at 7 p.m. (CT) when it takes on No. 4 Louisiana Tech at E.A. Diddle Arena. The Lady Toppers will be looking for their third win in the last four home games against the highly-regarded Lady Techsters, who knocked off second-ranked Connecticut Monday afternoon in Ruston, La. Last season, Katashia Witcher hit a driving layup at the buzzer as WKU upset then-No. 4 Louisiana Tech, 88-86, in Bowling Green.

--WKU--

Office of Sports Information / Room 146 / E.A. Diddle Arena
Western Kentucky University / 1 Big Red Way / Bowling Green, Ky. 42101
Telephone — (502) 745-4298 / FAX — (502) 745-3444 / e-mail — sports.information@wku.edu
Hilltopper Athletics on the World Wide Web — www.wku.edu/Athletics



Hilltopper **Sports** Information



Western Kentucky University

For Immediate Release // March 1, 1999

Women's Basketball // Contact: Chris Masters, assistant SID

Mansfield Earns WKU's Fourth Sun Belt Player of the Week Award

BOWLING GREEN, Ky. -- Western Kentucky center ShaRae Mansfield (So., Louisville, Ky.) has been named the *Wilson* Sun Belt Player of the Week, it was announced Monday. It's the second time this season the Manual High School graduate has won the conference's highest weekly honor and it marks the fourth time this year a Lady Topper has garnered the award. Forward Shea Lunsford won back-to-back Sun Belt Player of the Week laurels on Nov. 30 and Dec. 7, 1998. Only once before has Western won four conference player of the week awards in one season, when Lillie Mason and Kami Thomas both earned the honor twice during the 1985-86 campaign.

Mansfield averaged 18.5 points and 13.5 rebounds per game in two games last week, leading Western Kentucky in a loss at Arkansas State and a win over South Alabama. She posted 17 points and grabbed nine rebounds at Arkansas State Feb. 25. Two days later, she scored a game-high 20 points and pulled down a career-best 18 rebounds, notching her fifth career double-double (all this season) and helping the Lady Toppers defeat South Alabama, 80-43. Mansfield also was an very accurate shooter last week, hitting 57.7 percent (15-26) from the field and 77.8 percent (7-9) from the free throw line.

For the season, Mansfield ranks in the Top 10 in six different Sun Belt statistical categories. She is fifth in scoring (14.5 ppg), third in rebounding (8.0 ppg), second in field goal percentage (.557), fifth in blocked shots (1.04 bpg), second in offensive rebounds (3.42 rpg) and fifth in defensive rebounds (4.54 rpg).

Western Kentucky (20-6, 8-4 Sun Belt) returns to action Thursday (March 4) at 2:05 p.m. (CT) when it takes on South Alabama in the quarterfinals of the 1999 Sun Belt Conference Tournament at the ASU Convocation Center in Jonesboro, Ark. The third-seeded Lady Toppers swept both regular season meetings with the No. 6 Jaguars and have won their last 18 games against South Alabama.

--WKU--

Office of Sports Information / Room 146 / E.A. Diddle Arena

Western Kentucky University / 1 Big Red Way / Bowling Green, Ky. 42101

Telephone -- (502) 745-4298 / FAX -- (502) 745-3444 / e-mail -- sports.information@wku.edu

Hilltopper Athletics on the World Wide Web -- www.wku.edu/Athletics



Hilltopper **Sports** Information



Western Kentucky University

For 6 p.m. (CT) Release // March 3, 1999

Women's Basketball // Contact: Chris Masters, assistant SID

Three Lady Toppers Earn All-Conference Honors Covington is Sun Belt Freshman of the Year

BOWLING GREEN, Ky. -- Western Kentucky placed three players on the 1999 Sun Belt All-Conference Team, it was announced by the conference Wednesday night. Forwards Shea Lunsford (Sr., McKee, Ky.) and ShaRae Mansfield (So., Louisville, Ky.) and guard Katashia Witcher (Sr., Athens, Ga.) are the Lady Toppers' representatives on this year's squad. Western also boasts the 1999 Sun Belt Conference Freshman of the Year, as Kristina Covington (Fr., Elizabethtown, Ky.) was accorded top rookie honors, the first Lady Topper ever to win that award.

The all-conference selection is the first for all three players, although Lunsford and Witcher both were tapped for this year's preseason all-conference squad. Lunsford leads the Sun Belt in scoring (18.3 ppg) and is second in rebounding (11.0 rpg) and is the only conference player to rank in the Top 10 in nine different statistical categories. She has earned two Sun Belt Player of the Week awards this year, has notched 13 double-doubles and sits in the Top 10 on eight WKU career charts.

Mansfield came into her own this season, finishing among the conference leaders in scoring (14.5 ppg), rebounding (8.0 rpg) and field goal percentage (.557) in her first year as a starter. She recorded five double-doubles, the first of her career, and set new career marks in every single statistical category. Like Lunsford, she was a two-time Sun Belt Player of the Week this season.

Witcher has started every game at point guard for Western Kentucky this season, and has placed on the Sun Belt leaderboards in scoring (11.9 ppg) and assists (3.8 apg) for most of the year. She currently leads the team in assists (100) and needs just 31 assists to move into the Top 10 on Western's career assists chart.

Covington has been a force for the Lady Toppers in conference play. Since taking over the starting off-guard role for the injured Jaime Walz, Western has gone 6-0 with Covington in the lineup. She has earned two WKU Player of the Game awards and scored a career-best 12 points against No. 4 Louisiana Tech on Jan. 23. She is currently averaging 3.7 ppg and 2.3 rpg.

Western Kentucky (20-6, 8-4) is set to take on South Alabama Thursday at 2:05 p.m. (CT) in the quarterfinals of the 1999 Sun Belt Conference Tournament at the Convocation Center in Jonesboro, Ark. The Lady Toppers have won seven SBC Tournament titles, the most in conference history.

-WKU-

Office of Sports Information / Room 146 / E.A. Diddle Arena

Western Kentucky University / 1 Big Red Way / Bowling Green, Ky. 42101

Telephone — (502) 745-4298 / FAX — (502) 745-3444 / e-mail — sports.information@wku.edu

Hilltopper Athletics on the World Wide Web — www.wku.edu/Athletics



Hilltopper **Sports** Information



Western Kentucky University

For Immediate Release // April 10, 2000

Women's Basketball // Contact: Chris Masters, Assistant SID

Mansfield Selected to Attend U.S. Jones Cup Trials

BOWLING GREEN, Ky. — Western Kentucky University junior forward **ShaRae Mansfield (Louisville, Ky./Manual)** has been invited to participate in the 2000 R. William Jones Cup Team Trials May 17-22 at the U.S. Olympic Training Center in Colorado Springs, Colo. From the pool of 67 invitees, a team of 12 players will be selected to represent the United States in the 2000 R. William Jones Cup, to be held July 16-20 in Taipei, Taiwan. The team will also take part in a nationally-televised exhibition game against the 2000 U.S. Olympic Team on Sept. 3 in Honolulu, Hawaii.

The Jones Cup Team Trials will be held as part of the annual Summer Development Camp conducted by USA Basketball. The camp is designed to refine individual position skills in an effort to prepare participants for international basketball competition. Players will also compete in a round-robin tournament which will help in determining the 12-member Jones Cup squad.

"This is a big honor, and I don't think it has really set in yet," Mansfield said. "I'm definitely looking forward to proving myself and showing everybody what I'm capable of. I'm just going to go out there, play hard and get the job done and hopefully, I'll get a chance to represent the Lady Toppers on the national team."

"We are extremely excited and proud that ShaRae has received this opportunity," Western Kentucky head coach **Steve Small** said. "She has worked very hard to improve her game and this tryout is a reward for that effort. We know she will give everything she has towards representing our country in this prestigious tournament."

Mansfield was a third-team All-America selection by the *Women's Basketball News Service* this season. She was also a unanimous all-Sun Belt Conference selection and three-time SBC Player of the Week after leading the league in scoring (18.5 ppg), rebounding (10.6 rpg) and field goal percentage (.556) and ranking second in the nation with 22 double-doubles. In addition, she set school records for rebounds in a season (339) and points by a junior (593) and she is only the second Western player to average a double-double for an entire season.

Should she be selected to the U.S. Jones Cup squad, Mansfield would become just the third Lady Topper to be picked for a national team. **Terri Mann** represented WKU on the 1987 U.S. World University Games Team, and former Western standout **Danielle McCulley** earned a bronze medal as a member of the 1999 U.S. Pan American Games Team.

— WKU —

Office of Sports Information / Room 146 / E.A. Diddle Arena
Western Kentucky University / 1 Big Red Way / Bowling Green, Ky. 42101
Telephone — (270) 745-4298 / FAX — (270) 745-3444
Hilltopper Athletics on the World Wide Web — www.wku.edu/Athletics



Hilltopper **Sports** Information



Western Kentucky University

For Immediate Release // Jan. 31, 2000

Men's & Women's Basketball // Contact: Chris Masters, Assistant SID

Marcus, Mansfield Named Sun Belt Players of the Week

BOWLING GREEN, Ky. – Western Kentucky University basketball players **Chris Marcus (So., Charlotte, N.C.)** and **ShaRae Mansfield (Jr., Louisville, Ky.)** have been named the Sun Belt Conference Players of the Week, the league office announced Monday. It's the first time Western has earned both of the SBC's top honors in the same week since Chris Robinson and Gwen Doyle turned the trick on Feb. 20, 1995.

Marcus, a sophomore center, recorded three double-doubles in three games, averaging 16.6 points and 12.0 rebounds per game last week. He committed just one turnover in 89 minutes on the floor, hit 79.2 percent (19-of-24) from the field and blocked eight shots as the Hilltoppers downed Denver and dropped narrow decisions to Louisiana Tech and Louisiana-Lafayette. It's the first player of the week award of Marcus' career and the second by a Hilltopper this season. Senior Lee Lampley picked up the conference's weekly honor back on Dec. 13.

Mansfield, a junior forward and All-America candidate, tallied double-doubles in both Lady Topper games last week, averaging 23.5 points, 14.5 rebounds, 3.0 assists, and 3.0 steals per game, while shooting 66.7 percent (14-of-21) from the field and 95 percent (19-of-20) from the foul line. She now has a Sun Belt-best 12 double-doubles and 10 20-point games this season. No other SBC player has more than five double-doubles or eight 20-point games this year.

Mansfield also pulled down a career-high 19 rebounds and went 11-for-11 at the free throw line Saturday at New Orleans. The latter figure was the second-best foul shooting performance ever in a Sun Belt game. This week's player of the week award is the third of Mansfield's career and her first this season. Senior forward Jamie Britt also picked up top conference honors back on Jan. 17.

The Hilltoppers (5-13, 3-4) return to action Monday at 7:30 p.m. (CST) when they square off with Sun Belt rival New Orleans at Kiefer UNO Lakefront Arena. The Lady Toppers (12-7, 6-2), who have won seven of their last eight games, will try to continue their success Thursday at 7 p.m. when they play host to Arkansas-Little Rock in a SBC matchup at E.A. Diddle Arena.

— WKU —

Office of Sports Information / Room 146 / E.A. Diddle Arena
Western Kentucky University / 1 Big Red Way / Bowling Green, Ky. 42101
Telephone — (270) 745-4298 / FAX — (270) 745-3444
Hilltopper Athletics on the World Wide Web — www.wku.edu/Athletics



Hilltopper **Sports** Information



Western Kentucky University

For Immediate Release // Feb. 7, 2000

Women's Basketball // Contact: Chris Masters, Assistant SID

Mansfield Repeats as Sun Belt Player of the Week

BOWLING GREEN, Ky. - For the second consecutive week, Western Kentucky University forward **ShaRae Mansfield (Jr., Louisville, Ky.)** has been named the Sun Belt Conference Player of the Week, the conference office announced Monday. Mansfield is the third Lady Topper in as many seasons to earn back-to-back player-of-the-week awards, following in the footsteps of **Danielle McCulley** (1997-98) and **Shea Lunsford** (1998-99). It is the fourth time in her career that Mansfield has been so honored.

Mansfield averaged 20 points, 10 rebounds, 3.5 assists and three blocks per game and posted consecutive double-doubles last week, helping Western register a pair of important Sun Belt victories over Arkansas-Little Rock and Florida International. She scored 24 points and grabbed 10 rebounds last Thursday against UALR, notching her 11th 20-point game of the season, tops in the conference. She then came back with 16 points and 10 rebounds last Saturday against FIU, picking up her league-leading 14th double-double of the year, and her seventh double-up in the last eight games. By comparison, no other Sun Belt player has recorded more than five double-doubles all season.

Western Kentucky (14-7, 8-2) has won four in a row and nine of its last 10 games. The Lady Toppers will try to keep their hot streak going Thursday when they head to Lafayette, La., for a 7 p.m. (CST) game with Sun Belt foe Louisiana-Lafayette.

— WKU —

Office of Sports Information / Room 146 / E.A. Diddle Arena
Western Kentucky University / 1 Big Red Way / Bowling Green, Ky. 42101
Telephone — (270) 745-4298 / FAX — (270) 745-3444
Hilltopper Athletics on the World Wide Web — www.wku.edu/Athletics



Hilltopper **Sports** Information



Western Kentucky University

For Immediate Release // Feb. 21, 2000

Women's Basketball // Contact: Chris Masters, Assistant SID

Mansfield Wins Third Sun Belt Player of the Week Award

BOWLING GREEN, Ky. – For the third time this season, Western Kentucky University forward **ShaRae Mansfield (Jr., Louisville, Ky.)** has been named the Sun Belt Conference Player of the Week, the league office announced Monday. Mansfield is the first Lady Topper to win three SBC Player-of-the-Week awards in one season, with all three honors coming in the last four weeks. She is also the first Sun Belt player to earn conference player-of-the-week honors three times in one season since Amanda Wilson of Louisiana Tech in 1997-98.

Mansfield averaged 20.5 points and 13.5 rebounds per game last week, while shooting 78.9 percent from the field in wins over New Orleans and South Alabama. She recorded double-doubles in both games, finishing with a game-high 20 points and a game-best 10 rebounds against UNO and game highs of 21 points and 17 rebounds versus USA. Mansfield has a Sun Belt-best 17 double-doubles this season (10 in the last 12 games), tying her for sixth in the nation in that category. She also leads the SBC with 13 20-point games.

Western Kentucky (17-8, 11-3) returns to action at 7:05 p.m. (CST) Thursday when it takes on Arkansas-Little Rock at the new ALLTEL Arena in North Little Rock, Ark.

— **WKU** —

Office of Sports Information / Room 146 / E.A. Diddle Arena
Western Kentucky University / 1 Big Red Way / Bowling Green, Ky. 42101
Telephone — (270) 745-4298 / FAX — (270) 745-3444
Hilltopper Athletics on the World Wide Web — www.wku.edu/Athletics



Hilltopper **Sports** Information



Western Kentucky University

For Immediate Release // March 1, 2000

Women's Basketball // Contact: Chris Masters, Assistant SID

Mansfield Named Third Team All-American

BOWLING GREEN, Ky. – Western Kentucky University forward **ShaRae Mansfield (Jr., Louisville, Ky.)** has been selected to the Women's Basketball News Service All-America third team, it was announced Wednesday afternoon. Mansfield is the 14th Lady Topper to earn All-America honors, and the first WKU player to garner that distinction since **Leslie Johnson** was an *Associated Press* All-America honoree in 1998. Mansfield is also the seventh Lady Topper to be recognized by the WBNS, and the first since **Lillie Mason, Clemette Haskins, Kami Thomas** and **Debbie O'Connell** were honored in 1986.

The Women's Basketball News Service is comprised of the United States Basketball Writers Association, the Women's Basketball Coaches Association and the Metro Conference Sports Writers Association.

Mansfield leads the Sun Belt Conference in scoring (18.6 points per game), rebounding (10.4 per game), field goal percentage (.560) and offensive rebounds (4.04 per game), and she is among the league's top 10 in seven different statistical categories. She also ranks 20th in the nation in rebounding and 42nd nationally in scoring. In addition, Mansfield's 18 double-doubles are tops in the SBC and place her sixth in the country in that category. The Manual High School graduate has tallied double-doubles in 11 of her last 13 games.

Western Kentucky (18-8, 12-3) will close out the regular season at 7 p.m. (CST) Saturday when it takes on Sun Belt newcomer Denver at E.A. Diddle Arena. Prior to the game, WKU will honor its two seniors, **Jamie Britt** and **Jaime Walz**, and Mansfield and Britt are slated to sing the national anthem.

— WKU —

Office of Sports Information / Room 146 / E.A. Diddle Arena
Western Kentucky University / 1 Big Red Way / Bowling Green, Ky. 42101
Telephone — (270) 745-4298 / FAX — (270) 745-3444
Hilltopper Athletics on the World Wide Web — www.wku.edu/Athletics

WOMEN'S BASKETBALL NEWS SERVICE

Joseph C. Smith, Director

1999-2000 College All-America Teams**Player-of the Year:****Erin Buescher****UC-Santa Barbara****First Team:**

Erin Buescher	6-2	G	Jr	UC-Santa Barbara
Katie Douglas	6-1	G	Jr	Purdue
Kelly Miller	5-10	G	Jr	Georgia
Shea Ralph	5-11	G	Jr	Connecticut
Betty Lennox	5-8	G	Sr	Louisiana Tech
Tamika Catchings	6-1	F	Jr	Tennessee
Phylesha Whaley	5-10	F	Sr	Oklahoma
Jackie Stiles	5-8	G	Jr	SW Missouri St
Edwina Brown	5-10	G	Sr	Texas
Jill Morton	5-6	G	Sr	Louisville

2nd Team:

Sue Bird	5-8	G	So	Connecticut
Karalyn Church	6-0	F	Sr	Vermont
Stacy Frese	5-8	G	Sr	Iowa State
Svetlana Abrosimova	6-2	F	Jr	Connecticut
Nicole Kubik	5-10	G	Sr	Nebraska
Linda Frohlich	6-0	F	So	UNLV
Lynn Pride	6-2	F	Sr	Kansas
Stacy Clinesmith	5-8	G	Sr	UC-Santa Barbara
Diana Caramanico	6-2	F	Jr	Pennsylvania
Abbie Willenborg	6-2	CF	Sr	Marquette

3rd Team:

Zuzana Klimesova	6-2	F	So	Vanderbilt
Rhonda Smith	6-5	C	Sr	Long Beach State
Megan Fianza	5-10	G	Jr	Washington
Dawn Zeman	5-7	G	Sr	Kent
Taru Tuukkanen	6-3	F	Jr	Xavier
Georgia Schweitzer	6-0	G	Jr	Duke
Semeka Randall	5-10	G	Jr	Tennessee
Bryn Britton	5-11	G	So	Loyola Marymount
ShaRae Mansfield	6-2	F	Jr	Western Kentucky
Grace Daley	5-8	G	Sr	Tulane



News Release

5465 Mark Dabbling Blvd., Colorado Springs, CO 80918-3842
<http://www.usabasketball.com>

FOR IMMEDIATE RELEASE / May 4, 2000

For further information contact Craig Miller, Caroline Williams or Ben Fibbe at USA Basketball (719) 590-4800.

*This release is also available on USA Basketball's World Wide Web homepage - <http://www.usabasketball.com>.

45 Of The Nation's Top Collegians To Attend USA Basketball Women's Summer Development Camp / Jones Cup Trials

-Five Day Event Will Be Used To Select Women's R. William Jones Cup Team -

COLORADO SPRINGS, Colo. (May 4, 2000) -- Forty-five of the country's top female collegiate basketball players, including 15 with prior USA Basketball experience, have been accepted invitations to attend the 2000 USA Basketball Women's Summer Development Camp / R. William Jones Cup Team Trials May 17-22 in Colorado Springs, Colo., the USA Basketball Women's Select Team Committee announced today. The USA Basketball event will combine off-court seminars on topics such as life skills and sportsmanship with practice sessions and a four-team, round-robin tournament that will also serve as trials for the 2000 USA Basketball Women's R. William Jones Cup Team. The USA squad will compete in the R. William Jones Cup which will be held July 16-20 in Taipei, Taiwan.

The USA Basketball Jones Cup squad will be coached by Virginia Tech head mentor Bonnie Henrickson, who served as an assistant coach on the gold medal winning 1999 USA Basketball Women's World University Games squad. St. Joseph's head coach Stephanie Gaitley and Grambling State head coach David "Rusty" Ponton have been slated as assistant coaches for the Jones Cup team.

The 12-member U.S. squad, which will be announced on May 22, will train July 3-12 at the U.S. Olympic Training Center in Colorado Springs, Colorado, before departing on July 13 for the Jones Cup competition. The United States, the defending Jones Cup gold medalists, has collected eight gold medals, four silver medals and four bronze medals in 18 Jones Cup competitions and boasts a 110-22 (83.3 %) overall record.

The USA Basketball R. William Jones Cup Team will reassemble on Aug. 29 in Honolulu, Hawaii, to begin training for a Sept. 3 exhibition game with the U.S. Women's Senior National Team. The contest, held at the University of Hawaii, will be nationally televised at 5:00 p.m. (EST) on ESPN2 and will be the final domestic exhibition game for the USA National Team before it leaves for Australia to continue preparations for the 2000 Olympics in Sydney, Australia.

Included on the 2000 USA Basketball Women's Development Camp / Jones Cup Trials roster are: **Chantelle Anderson** (Vanderbilt / Vancouver, Wash.); **Tombi Bell** (Florida / Miami, Fla.); **Sue Bird** (Connecticut / Syosset, N.Y.); **Eriq Buescher** (UC Santa Barbara / Rohnert Park, Calif.); **Damita Bullock** (UT-Chattanooga / Harrisburg, Pa.); **Diana Caramanico** (Pennsylvania / Blue Bell, Pa.); **LaNeisha Caufield** (Oklahoma / Ada, Okla.); **Kaayla Chones** (North Carolina State / Pepper Pike, Ohio); **Rasheeda Clark** (Pepperdine / Ontario, Calif.); **Camille Cooper** (Purdue / Georgetown, Ky.); **Allison Curtin** (Illinois / Stonington, IL); **Marie Ferdinand** (Louisiana State / Miami, Fla.); **Catrina Frierson** (Louisiana Tech / Vicksburg, MS); **Michelle Greco** (UCLA / LaCrescenta, Calif.); **Deanna Jackson** (Alabama-Birmingham / Birmingham, Ala.); **Nicole Kaczmariski** (UCLA / Middle Island, N.Y.); **Schuyel LaRue**

(Virginia / Washington, D.C.); **Erica Lawrence** (George Washington / Nyack, N.Y.); **ShaRae Mansfield** (Western Kentucky / Louisville, Ky.); **Brandi McCain** (Florida / Silsbee, Texas); **Carolyn Moos** (Stanford / Wayzata, Minn.); **Jenny Mowe** (Oregon / Powers, Ore.); **Lori Nero** (Auburn / Baton Rouge, La.); **Loree Payne** (Washington / Livingston, Mont.); **Jennifer Phillips** (Xavier / Elida, Ohio); **Pienette Pierson** (Texas Tech / Houston, Texas); **Telisha Quarries** (Virginia / Charlottesville, Va.); **Felicia Ragland** (Oregon State / Tulare, Calif.); **Shea Ralph** (Connecticut / Fayetteville, N.C.); **Alicia Ratay** (Notre Dame / Lake Zurich, Ill.); **Jenny Roulier** (Colorado / Englewood, Colo.); **Kelly Schumacher** (Connecticut / Quyon, Canada); **Sabrina Scott** (Colorado / Lake Oswego, Ore.); **Lisa Shepherd** (Penn State / Richmond, Ind.); **Amy Simpson** (North Carolina State / Reidsville, N.C.); **Michelle Snow** (Tennessee / Pensacola, Fla.); **Jackie Stiles** (Southwest Missouri State / Claflin, Kan.); **Jesse Stomski** (Wisconsin / Oakdale, Minn.); **Ayana Walker** (Louisiana Tech / Houston, Texas); **Maren Walseth** (Penn State / Bloomington, Minn.); **Shaquala Williams** (Oregon / Portland, Ore.); **Tere Williams** (Virginia Tech / Chapel Hill, N.C.); **Lindsey Wilson** (Iowa State / Seattle, Wash.); **Brooke Wyckoff** (Florida State / West Chester, Ohio) and **Angela Zampella** (St. Joseph's / Hoboken, N.J.).

Highlighting the USA invitees are 15 players with previous USA Basketball experience. Leading the way is Southwest Missouri State's Stiles who has played for three different USA Basketball teams. Stiles, who led the nation in scoring in 2000, was a member of the 1998 Women's Select Team, the gold medal winning 1997 Junior World Championship Team and the 1996 Junior World Championship Qualifying Team. Also featured on multiple USA rosters is Wyckoff. Wyckoff suited up for USA Basketball on the 1998 Women's Select Team and last summer on the silver medal winning 1999 Women's World University Games Team. Joining Wyckoff on last summer's World University Games Team were Clark, Cooper, McCain and Walker. Other trials invitees who boast of prior USA Basketball experience include Buescher, who was a member of the gold medal winning 1998 R. William Jones Cup Team; Anderson, Choncs and Ratay, who played on the bronze medal winning 1998 Women's World Youth Games Team; and Moos and Mowe, who teamed up to help lead the 1997 Women's Junior World Championship Team to the gold medal. Additionally, Shaquala Williams and Mowe were alternates for the USA Basketball 1999 Women's World University Games Team, while Buescher, Caufield, Moos, Snow and Stiles were all 1999 World University Games Trials participants.

Featured at this year's trials will be four players who garnered All-NCAA Tournament recognition and three players who received All-America honors. Final 4 MVP Ralph, along with UConn backcourt mate Bird, were both named to the 2000 NCAA Tournament's All Final Four team while Pierson and Shepherd garnered NCAA Tournament All-Regional honors. Receiving All-America status were Buescher (AP, third team), Ralph (AP, first team) and Stiles (U.S. Basketball Writers).

Fourteen different conferences and 34 schools have representation on the list with the Pacific 10 receiving top honors with seven players. The Southeastern Conference boasts six players, while the Atlantic Coast Conference, the Big 12 and the Big 10 feature five each.

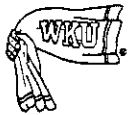
Of the 45 players invited, 13 were selected to their all-conference first team. All-conference first team selections include, Big West Player of the Year Buescher, Bullock (Southern Conference), Ivy League Player of the Year Caramanico, Cooper (Big 10), Curtin (Big 10), Ferdinand (Southeastern Conference), Jackson (Conference USA), Mansfield (Sun Belt), Ragland (Pacific 10), Southwest Missouri Valley Conference Player of the Year Stiles, Big East Player of the Year Ralph, Pacific 10 Player of the Year Shaquala Williams and Tere Williams (Atlantic 10).

***** MEDIA NOTE *****

Media members interested in attending the 2000 USA Basketball Women's Summer Development Camp / Jones Cup Team Trials, or coordinating a telephone interview with an athlete or coach during trials, should contact the USA Basketball Media Relations Department at (719) 590-4800.

1999 USA Women's Summer Development Camp / Jones Cup Team Trials Roster

NAME	POS	HGT	WGT	DOB	YOG	COLLEGE / HOMETOWN
Chantelle Anderson	C	6-6	185	01/22/81	2003	Vanderbilt / Vancouver, WA
Tombi Bell	G	5-5	135	04/19/79	2001	Florida / Miami, FL
Sue Bird	G	5-9	150	10/16/80	2002	Connecticut / Syosset, NY
Erin Buescher	G	6-3	175	06/05/79	2001	UC Santa Barbara / Rohnert Park, CA
Damita Bullock	G	5-10	142	06/05/77	2002	UT-Chattanooga / Harrisburg, PA
Diana Caramanico	F	6-2	175	01/01/79	2001	Pennsylvania / Bluebell, PA
LaNeisha Caufield	F	5-9	153	05/25/80	2002	Oklahoma / Ada, OK
Kaayla Chones	F	6-3	185	01/11/81	2003	North Carolina State / Pepper Pike, OH
Rashceda Clark	G	5-10	140	11/01/78	2001	Pepperdine / Ontario, CA
Camille Cooper	C	6-4	190	02/05/79	2001	Purdue / Georgetown, KY
Allison Curtin	G	5-9	125	03/31/80	2002	Illinois / Stonington, IL
Marie Ferdinand	G	5-8	151	10/13/78	2001	Louisiana State / Miami, FL
Catrina Frierson	F	6-1	195	10/13/80	2003	Louisiana Tech / Vicksburg, MS
Michelle Greco	G	5-9	153	03/24/80	2002	UCLA / LaCrescenta, CA
Deanna Jackson	F	6-2	154	12/15/79	2003	Alabama-Birmingham / Birmingham, AL
Nicole Kaczmariski	G	5-11	168	04/30/81	2003	UCLA / Middle Island, NY
Schuye LaRue	F	6-3	165	09/10/81	2003	Virginia / Washington, DC
Erica Lawrence	F	6-0	124	01/06/80	2003	George Washington / Nyack, NY
ShaRae Mansfield	F	6-2	165	10/05/78	2001	Western Kentucky / Louisville, KY
Brandi McCain	G	5-3	125	09/21/79	2003	Florida / Silsbee, TX
Carolyn Moos	C	6-3	175	05/23/78	2001	Stanford / Wayzata, MN
Jenny Mowe	C	6-5	230	02/25/78	2001	Oregon / Powers, OR
Lori Nero	F	6-2	180	08/08/80	2002	Auburn / Baton Rouge, LA
Loree Payne	G	6-0	165	07/30/81	2003	Washington / Livingston, MT
Jennifer Phillips	F	6-3	180	06/19/79	2001	Xavier / Elida, OH
Plenette Pierson	C	6-2	165	08/31/81	2003	Texas Tech / Kingwood, TX
Telisha Quarles	G	5-8	132	06/20/80	2002	Virginia / Charlottesville, VA
Felicia Ragland	G	5-9	125	02/03/80	2002	Oregon State / Tulare, CA
Shea Ralph	G	6-0	170	03/12/78	2001	Connecticut / Fayetteville, NC
Alicia Ratay	G	5-11	145	04/17/81	2003	Notre Dame / Lake Zurich, IL
Jenny Roulier	G	5-9	150	10/16/79	2002	Colorado / Englewood, CO
Kelly Schumacher	F	6-5	180	10/14/77	2001	Connecticut / Quyon, Canada
Sabrina Scott	F	6-2	183	01/03/81	2003	Colorado / Lake Oswego, OR
Lisa Shepherd	G	5-11	157	05/28/79	2002	Penn State / Richmond, IN
Amy Simpson	F	6-0	180	04/09/81	2003	North Carolina State / Reidsville, NC
Michelle Snow	C	6-5	150	03/20/80	2002	Tennessee / Pensacola, FL
Jackie Stiles	G	5-8	140	12/21/78	2001	Southwest Missouri State / Claflin, KS
Jesse Stomski	F	6-3	190	01/02/80	2002	Wisconsin / Oakdale, MN
Ayana Walker	C	6-2	154	09/10/79	2002	Louisiana Tech / Houston, TX
Maren Walseth	F	6-3	180	10/28/78	2002	Penn State / Bloomington, MN
Shaquala Williams	G	5-6	137	04/14/80	2002	Oregon / Portland, OR
Tere Williams	F	5-11	157	12/30/78	2001	Virginia Tech / Chapel Hill, NC
Lindsey Wilson	G	5-9	156	04/19/81	2003	Iowa State / Seattle, WA
Brooke Wyckoff	F	6-1	180	03/30/80	2001	Florida State / West Chester, OH
Angela Zampella	G	5-7	155	02/14/78	2000	St. Joseph's / Hoboken, NJ



Hilltopper **Sports** Information

Western Kentucky University



For Immediate Release // April 24, 2000
Miscellaneous // Contact: Chris Masters, Assistant SID

Vencill, Mansfield Named WKU Athletes of the Year

BOWLING GREEN, Ky. -- Swimming star Kicker Vencill (Sr., Richmond, Ky.) and basketball standout ShaRae Mansfield (Jr., Louisville, Ky.) have been named the 1999-2000 Western Kentucky University Male and Female Athletes of the Year. The pair were recognized in ceremonies held recently on the WKU campus.

Vencill was named the Hilltoppers' Most Valuable Swimmer for the third consecutive year after qualifying for the U.S. Olympic trials in the 100-yard freestyle. He also qualified for the NCAA Tournament, finishing 23rd in the 100 freestyle.

The Model High School product also owns school records in the 100 and 200-yard freestyle events and was undefeated in the regular season in the 100 free. He set a National Independent Conference Championship record in the 100 freestyle and was named the NIC Swimmer of the Year after winning the 50, 100 and 200 freestyle events. In addition, he was named the Most Outstanding Swimmer at the Notre Dame Invitational, setting Notre Dame pool records in the 50, 100 and 200 free events.

Vencill is the sixth Hilltopper swimmer, and second in as many years, to win Athlete-of-the-Year honors. Travis Mandigo earned the award last year.

Mansfield was the Lady Toppers' Most Valuable Player after being named a third-team All-American by the *Women's Basketball News Service*. She was also a unanimous all-Sun Belt Conference selection and a three-time Sun Belt Player of the Week, the first Lady Topper ever to be so honored.

A graduate of Manual High School in Louisville, Mansfield led the Sun Belt in scoring (18.5 ppg), rebounding (10.6 rpg) and field goal percentage (55.6%), ranking in the top 45 nationally in all three categories. She also set school records for the most points by a WKU junior (593) and most rebounds in a season (339).

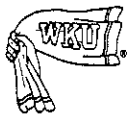
Mansfield ranked second in the country with 22 double-doubles and became only the second Western player to average a double-double for an entire season. In addition, she scored in double figures in all 32 Lady Topper games, extending her current streak to 56 consecutive games. She was also named to three all-tournament teams this year, including the Sun Belt Tournament squad.

Mansfield will look to represent Western Kentucky on the United States national team when she participates in USA Basketball's Summer Development Camp and the 2000 R. William Jones Cup Team Trials May 17-22 at the U.S. Olympic Training Center in Colorado Springs, Colo.

Mansfield is the 12th women's basketball player to be named Athlete of the Year, but the first since Gwen Doyle earned the award in 1995. With 12 Athlete-of-the-Year honorees in the 27-year history of the award, the women's basketball program now has the most winners of any sport on the Hill.

— WKU —

Office of Sports Information / Room 146 / E.A. Diddle Arena
Western Kentucky University / 1 Big Red Way / Bowling Green, Ky. 42101
Telephone — (270) 745-4298 / FAX — (270) 745-3444 / e-mail — sports.information@wku.edu
Hilltopper Athletics on the World Wide Web — www.wku.edu/Athletics



Hilltopper **Sports** Information

Western Kentucky University



FOR IMMEDIATE RELEASE // Oct. 2, 2000

Women's Basketball // Contact: Chris Masters, Assistant SID

MANSFIELD NAMED PRESEASON ALL-AMERICAN BY STREET & SMITH'S

Lady Topper senior one of 10 players selected by prestigious national magazine

BOWLING GREEN, Ky. — Although Western Kentucky University does not begin practice for almost two weeks, Lady Topper forward **ShaRae Mansfield (Louisville, Ky./Manual HS)** has already picked up her first award of the 2000-01 season. The 6-foot-2 senior was tabbed as a preseason All-American in the college basketball preview edition of *Street & Smith's*, which is now on newsstands nationwide. Mansfield is the first Lady Topper ever to earn preseason All-America honors from the magazine, and she is the only Sun Belt Conference player to appear on this year's 10-member team (see below).

"ShaRae Mansfield is the best player you've never heard of, but the 6-2 senior forward is no stranger to WNBA scouts," the magazine states. "The (Lady Toppers') typically tough preseason schedule ... will give Mansfield a chance to strut her stuff outside the Sun Belt Conference."

A unanimous all-conference choice last season, Mansfield led the Sun Belt in scoring (18.5 ppg), rebounding (10.6 rpg) and field goal percentage (55.6%), and was one of only four players in the nation to appear in the final NCAA statistical rankings in all three categories. She was a third-team All-America selection by the *Women's Basketball News Service* and an honorable mention All-America pick by *Basketball Times*. She also ranked second in the nation with 22 double-doubles last year.

In addition, Western Kentucky was recognized by *Street & Smith's*, which designated the Lady Toppers as one of "The Best of the Rest" in the South region. WKU has seven letterwinners and three starters returning from last season's 22-10 team which finished second in the Sun Belt and reached the NCAA Tournament for the 14th time in school history.

The Lady Toppers will begin their 2000-01 season Sunday, Nov. 5 at 2 p.m. (CST) with an exhibition game against Freestyle Express at E.A. Diddle Arena. Western opens the regular season Friday, Nov. 17 at 6:30 p.m. against defending West Coast Conference champion Pepperdine at the Hawaiian Regent Classic in Honolulu, Hawaii.

— WKU —

Street & Smith's 2000-01 Preseason All-America Team

Svetlana Abrosimova, Connecticut

Sue Bird, Connecticut

Tamika Catchings, Tennessee

Katie Douglas, Purdue

Marie Ferdinand, LSU

Schuye LaRue, Virginia

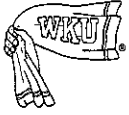
ShaRae Mansfield, Western Kentucky

Kelly Miller, Georgia

Jackie Stiles, Southwest Missouri State

LaToya Thomas, Mississippi State

Office of Sports Information / Room 144 / E.A. Diddle Arena
Western Kentucky University / 1 Big Red Way / Bowling Green, Ky. 42101
Telephone — (270) 745-4298 / FAX — (270) 745-3444 / e-mail — sports.information@wku.edu
Hilltopper Athletics on the Internet — www.wkusports.com



Hilltopper **Sports** Information

Western Kentucky University



FOR IMMEDIATE RELEASE // Oct. 10, 2000

Women's Basketball // Contact: Chris Masters, Assistant SID

MANSFIELD NAMED PRESEASON ALL-AMERICAN BY WOMEN'S BASKETBALL JOURNAL

Second national preseason honor in three weeks for Lady Topper senior

BOWLING GREEN, Ky. — For the second time in less than a month, Western Kentucky University forward **ShaRae Mansfield (Louisville, Ky./Manual HS)** has been selected as a preseason All-American by a major national publication. On Tuesday, the Lady Topper senior was named a fourth-team preseason All-American by the *Women's Basketball Journal*, considered by most experts to be the top national magazine devoted specifically to women's basketball. Mansfield is also the highest-rated Sun Belt Conference player according to the *WBJ*. A complete listing of the 2000-01 *WBJ* preseason All-America Team may be found at the publication's web site — womensbballjournal.rivals.com.

Mansfield's selection comes on the heels of her recognition as a preseason All-American in *Street & Smith's* college basketball preview edition, which is on newsstands nationwide. She is the first Lady Topper ever to earn preseason All-America honors from more than one national publication.

A unanimous all-conference choice last season, Mansfield led the Sun Belt in scoring (18.5 ppg), rebounding (10.6 rpg) and field goal percentage (55.6%), and was one of only four players in the nation to appear in the final NCAA statistical rankings in all three categories. She was a third-team All-America selection by the *Women's Basketball News Service* and an honorable mention All-America pick by *Basketball Times*. She also ranked second in the nation with 22 double-doubles last year.

Western Kentucky has seven letterwinners and three starters returning from last season's 22-10 team which finished second in the Sun Belt and reached the NCAA Tournament for the 14th time in school history.

The Lady Toppers will begin their 2000-01 season Sunday, Nov. 5 at 2 p.m. (CST) with an exhibition game against Freestyle Express at E.A. Diddle Arena. Western opens the regular season Friday, Nov. 17 at 6:30 p.m. against defending West Coast Conference champion Pepperdine at the Hawaiian Regent Classic in Honolulu, Hawaii.

— WKU —

Office of Sports Information / Room 144 / E.A. Diddle Arena
Western Kentucky University / 1 Big Red Way / Bowling Green, Ky. 42101
Telephone — (270) 745-4298 / FAX — (270) 745-3444 / e-mail — sports.information@wku.edu
Hilltopper Athletics on the Internet — www.wkusports.com



Hilltopper **Sports** Information

Western Kentucky University



FOR IMMEDIATE RELEASE // Jan. 10, 2001

Women's Basketball // Contact: Chris Masters, Assistant SID

POWERS, MANSFIELD AMONG NCAA SCORING LEADERS

Western one of only two schools to have two players in top 25

BOWLING GREEN, Ky. — Western Kentucky University junior guard **Natalie Powers** (Owensboro, Ky./Apollo HS) and senior All-America forward **ShaRae Mansfield** (Louisville, Ky./Manual HS) are both ranked in the top 25 in the nation in scoring, according to the latest NCAA statistics report released Wednesday. WKU joins Baylor as the only two schools to have two players in the top 25.

Powers is tied for seventh in the country with an average of 21.8 points per game, which leads the Sun Belt Conference. She has scored 20 or more points eight times in 13 games this season, including a career-high 29 in the Lady Toppers' season opener against Pepperdine. Powers has been even better in conference play, averaging 24 ppg through three contests.

Mansfield is ranked 23rd in the nation with 20.2 points per game, good for third in the Sun Belt. She has scored in double figures in every Lady Topper game this season, extending her streak to 68 consecutive games. Her best performance this year came on Dec. 4, when she poured in a career-high 31 points in a win at Tennessee Tech.

Western Kentucky (9-4, 3-0 Sun Belt) will look to stretch its five-game winning streak Thursday when it entertains league rival South Alabama in a 7 p.m. (CST) game at E.A. Diddle Arena.

— WKU —

Office of Sports Information / Room 144 / E.A. Diddle Arena
Western Kentucky University / 1 Big Red Way / Bowling Green, Ky. 42101
Telephone — (270) 745-4298 / FAX — (270) 745-3444 / e-mail — sports.information@wku.edu
Hilltopper Athletics on the Internet — www.wkusports.com



Hilltopper Sports Information
Western Kentucky University



FOR IMMEDIATE RELEASE // Feb. 13, 2001

Women's Basketball // Contact: Chris Masters, Assistant SID

MANSFIELD NAMED SUN BELT CONFERENCE PLAYER OF THE WEEK

Senior All-American picks up weekly honor for sixth time in career

BOWLING GREEN, Ky. — Western Kentucky senior All-America forward **ShaRae Mansfield** (Louisville, Ky./Manual HS) has been selected the Wilson Sun Belt Conference Player of the Week, the league office announced Tuesday. It is the sixth time in her career that Mansfield has earned the SBC's top weekly honor, tying her with Old Dominion's **Kelly Lyons** for the second-most Player-of-the-Week awards in conference history.

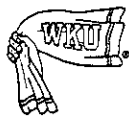
Mansfield averaged 21.5 points and 8.5 rebounds last week as Western split Sun Belt games with New Orleans and No. 8 Louisiana Tech. She scored a game-high 31 points in the win over UNO, going over the 30-point mark for the third time this season. She also became the first Lady Topper in 20 years, and second in school history, to record three 30-point games in a single season. Four days later against Louisiana Tech, Mansfield notched her 11th double-double of the year, finishing with 12 points and a game-high 11 rebounds. For the week, she was 18-of-34 from the field, shooting a superb 52.9 percent, and she extended her double-digit scoring streak to 79 consecutive games.

Mansfield is the second Lady Topper to win Player-of-the-Week honors this season — junior guard **Natalie Powers** (Owensboro, Ky./Apollo HS) was tapped for the award back on Dec. 11.

Western Kentucky (15-9, 7-5 Sun Belt) returns to action Thursday at 6 p.m. (CST) when it kicks off a two-game conference road trip at Florida International.

— WKU —

Office of Sports Information / Room 152 / EA Diddle Arena
Western Kentucky University / 1 Big Red Way / Bowling Green, Ky. 42101
Telephone — (270) 745-4298 / FAX — (270) 745-3444 / e-mail — sports.information@wku.edu
Hilltopper Athletics on the Internet — www.wkusports.com



Hilltopper **Sports** Information

Western Kentucky University



For 8 p.m. (CDT) Release // April 3, 2001

Women's Basketball // Contact: Chris Masters, Assistant SID

LADY TOPPER CAGERS RECOGNIZED AT ANNUAL AWARDS BANQUET

Mansfield & Powers share Most Valuable Player honors

BOWLING GREEN, Ky. — The Western Kentucky University women's basketball team wrapped up a successful 2000-01 season with its annual awards banquet Tuesday evening at the Institute for Economic Development on WKU's South Campus in Bowling Green.

The '00-01 Lady Toppers made the quarterfinals of a postseason tournament for the fourth time in school history, reaching the round of eight in the Women's National Invitation Tournament (WNIT) before falling to eventual WNIT champion Ohio State. During its recently-completed season, Western also defeated NCAA Final Four participant Southwest Missouri State (ranked fourth in the final ESPN/USA Today coaches' poll), along with NCAA Tournament qualifiers Louisville and Denver and NIT invitee Florida International. The Lady Toppers finished the year with a 19-14 record, sewing up their 19th consecutive winning season and 24th winning campaign in the last 28 years.

Several individual honors were also presented at the awards banquet Tuesday evening:

CO-MOST VALUABLE PLAYER

ShaRae Mansfield (Sr., Louisville, Ky./Manual HS)

A preseason All-America selection and the 2000-01 preseason Sun Belt Conference Player of the Year, Mansfield became the second player in school history, and the sixth Sun Belt athlete, to amass 1,000 points and 1,000 rebounds in her career, finishing second on both WKU charts with 1,804 points and 1,000 rebounds. She was also named to the all-Sun Belt team for the third consecutive season, making her the fifth player in school history to turn that trick. In addition, she leaves Western as one of two players to rank in the top 10 in 13 different career statistical categories — only the legendary Lillie Mason can also lay claim to that feat. It's the second consecutive year Mansfield has been chosen as the Lady Toppers' team MVP.

The Manual High School graduate will begin the next chapter in her basketball career Thursday afternoon when she takes part in the WNBA Pre-Draft Camp at the Moody Bible Institute in Chicago. The WNBA Draft is slated for April 20, beginning at 10:30 a.m. (CDT), with the opening round to be shown live on ESPN2.

CO-MOST VALUABLE PLAYER / DEFENSIVE PLAYER OF THE YEAR / COACHES AWARD

Natalie Powers (Jr., Owensboro, Ky./Apollo HS)

Powers had perhaps the finest season ever by a Lady Topper basketball player, setting five single-season and two single-game records during the 2000-01 campaign. An all-conference selection, Powers led the Sun Belt and ranked in the top 10 in the nation in scoring (22.3 ppg) and three-point percentage (.442), posting 20-plus points in 22 of 33 games this season. She also established single-season school records for total points (736), free throws made (218) and free throws attempted (266), setting new Sun Belt marks in the latter two categories. Powers is a first-time winner of the MVP and Coaches Awards, while the Defensive Player-of-the-Year trophy is her second in as many years. The Apollo High School product will be considered a prime candidate for All-America honors next season.

(MORE)

Office of Sports Information / Room 152 / E.A. Diddle Arena
Western Kentucky University / 1 Big Red Way / Bowling Green, Ky. 42101
Telephone — (270) 745-4298 / FAX — (270) 745-3444 / e-mail — sports.information@wku.edu

LADY TOPPER CAGERS HONORED ... PAGE 2

ROOKIE AWARD

Camryn Whitaker (Fr., Cynthiana, Ky./Harrison County HS)

Whitaker put together one of the best seasons ever by a Lady Topper newcomer, setting school records for assists (170) and assists-per-game (5.15) by a freshman. She also became just the second player in school history to average more than five assists per game for an entire season, joining Clemette Haskins in that elite sorority. In addition, she became the first Lady Topper in 14 years to record double-digit assist total four times in one season. And, she was a potent scorer when the situation arose, hitting for a season-high 16 points in Western's 74-69 upset win of Final Four participant Southwest Missouri State on Jan. 29.

HARRY BURNS COURAGE AWARD

Kristina Covington (So., Elizabethtown, Ky./Elizabethtown HS)

Covington rebounded brilliantly after missing virtually all of the 1999-2000 season with a torn anterior cruciate ligament (ACL) in her left knee. Showing no ill effects from her injury, the former Sun Belt Conference Freshman of the Year averaged a career-best 10.2 points and 6.2 rebounds per game this season, ranking in the top 25 in the Sun Belt in both categories. She also proved to be a deadly three-point shooter, placing second on the team with 61 triples this season. In addition, Covington etched her place in school history, becoming the first Lady Topper to record a 20-20 game, finishing with career highs of 24 points and 20 rebounds in a win over South Florida Dec. 18. The 20-rebound performance also tied the school record and was the first-ever by a Western guard. It's the second time Covington has been recognized at the WKU Awards Banquet — she was named the WKU Rookie of the Year in 1999.

SAM CAMPBELL INSPIRATIONAL AWARD

Jennifer Slaughter (So., Brownsville, Ky./Edmonson County HS)

Despite being hampered by injuries for much of her first two seasons on the Hill, Slaughter has proven to be a valuable asset off the bench for the Lady Toppers. She earned the first starting assignment of her career on Dec. 18 at South Florida and responded with career highs of five points, six rebounds and two assists in 28 minutes as Western downed the Bulls in overtime. Slaughter saw action in 15 games for the Lady Toppers this season, missing extended periods of time after suffering a stress fracture in her leg and a sprained ankle. It's the second individual award for Slaughter, who also shared the Academic Achievement Award last season.



Hilltopper **Sports** Information

Western Kentucky University



FOR IMMEDIATE RELEASE // April 17, 2001

Women's Basketball // Contact: Chris Masters, Assistant SID

POWERS RANKS AS ONE OF TOP SCORERS AND SHOOTERS IN NATION

Mansfield also makes the grade for second consecutive year

BOWLING GREEN, Ky. — Western Kentucky University junior guard **Natalie Powers** (Owensboro, Ky./**Apollo HS**) ranked sixth in the nation in scoring, according to the final 2000-01 NCAA statistics report released this week. Powers averaged a school-record 22.3 points per game, and set a new WKU standard with 736 points this season. She was also one of only two players in the country to record 200 field goals, 50 three-point field goals, and 200 free throws this season — the other was Wade Trophy winner and All-America guard **Jackie Stiles** of Southwest Missouri State.

In addition to her scoring prowess, Powers placed ninth in the country in three-point field goal percentage, connecting at a 44.2 percent clip from beyond the arc. She was at her best in the postseason, hitting 54.5 percent of her three-point shots while leading the Lady Toppers to a berth in the quarterfinals of the Women's National Invitation Tournament, Western's best postseason finish in nine seasons.

Senior All-America forward **ShaRae Mansfield** (Louisville, Ky./**Manual HS**) capped her brilliant WKU career by ranking 26th in the nation in scoring at 19.4 ppg. It's the second time in as many years she has placed in the top 40 in the country in scoring. And, she and Powers combine to make the Lady Toppers one of only two teams in the nation (along with Baylor) to place two players in the top 30 on the NCAA's final scoring chart.

Western Kentucky also picked up a team honor, placing 23rd in the nation in free throw percentage with a .743 mark. Powers set the pace in that category as well, hitting a team-best 82 percent from the line, highlighted by school and Sun Belt Conference records for free throws made (218) and free throws attempted (266).

The Lady Toppers posted a 19-14 record this season, reaching the postseason for the 16th time in the last 17 years. WKU also logged a winning record for the 19th consecutive season and the 24th time in the last 28 years.

— WKU —

Office of Sports Information / Room 152 / E.A. Diddle Arena
Western Kentucky University / 1 Big Red Way / Bowling Green, Ky. 42101
Telephone — (270) 745-4298 / FAX — (270) 745-3444 / e-mail — sports.information@wku.edu
Hilltopper Athletics on the Internet — www.wkusports.com



Hilltopper **Sports** Information

Western Kentucky University



FOR IMMEDIATE RELEASE // April 24, 2001

Miscellaneous // Contact: Chris Masters, Assistant SID

MARCUS, MANSFIELD NAMED WKU ATHLETES OF THE YEAR

Mansfield becomes only the second two-time winner in school history

BOWLING GREEN, Ky. — Basketball standouts **Chris Marcus (Charlotte, N.C./Olympic HS)** and **ShaRae Mansfield (Louisville, Ky./Manual HS)** have been named the 2000-01 Western Kentucky University Male and Female Athletes of the Year.

Marcus is the seventh Hilltopper basketball player to receive Athlete-of-the-Year recognition, and the first since **Darrin Horn** was tapped for the award in 1995. It continues an impressive string of honors for the 7-1 junior center, who was named the 2001 Sun Belt Conference Player of the Year, SBC Defensive Player of the Year and Most Outstanding Player of the conference tournament. In addition, he was an honorable mention All-America pick by the *Associated Press*.

Marcus was a dominant force in the middle for Western this season, leading the nation in rebounding (12.1 rpg) to become the first Hilltopper in 42 years (and third in school history) to win an NCAA statistical championship. He also ranked among the national leaders in blocked shots (3.1 bpg - 11th) and double-doubles (20 - 3rd), and is only the second WKU player in the last 30 years to average a double-double for an entire season.

Thanks to Marcus' exploits, Western enjoyed a stellar 24-7 campaign, winning Sun Belt East Division and Tournament championships, as well as a berth in the NCAA Tournament for the first time since 1995.

Mansfield is the second two-time Athlete-of-the-Year winner in school history, following up on the award she won in 2000 — former track star **Christina Brown** is the only other double honoree, garnering the accolades in 1996 and '97. Mansfield is also the 13th Lady Topper basketball player to be selected as WKU's Athlete of the Year.

A preseason All-America selection and the 2000-01 preseason Sun Belt Player of the Year, Mansfield became the second player in school history, and the sixth SBC athlete, to amass 1,000 points and 1,000 rebounds in her career, finishing second on both WKU charts with 1,804 points and 1,000 rebounds. The 6-2 senior forward was also named to the all-Sun Belt team for the third consecutive season, making her the fifth player in school history to turn that trick. She leaves Western as one of two players to rank in the top 10 in 13 different career statistical categories — only the legendary **Lillie Mason** can also lay claim to that feat.

Mansfield helped pace the Lady Toppers to a 19-14 record and a spot in the quarterfinals of the Women's National Invitation Tournament (WNIT), Western's best postseason finish in nine years. And, Mansfield's career may not be over — she became the first Western player ever chosen in the WNBA Draft, when she was selected by the four-time league champion Houston Comets in the third round last Friday.

— WKU —

Office of Sports Information / Room 152 / E.A. Diddle Arena
Western Kentucky University / 1 Big Red Way / Bowling Green, Ky. 42101
Telephone — (270) 745-4298 / FAX — (270) 745-3444 / e-mail — sports.information@wku.edu
Hilltopper Athletics on the Internet — www.wkusports.com



Western Kentucky University

Athletic Media Relations



FOR IMMEDIATE RELEASE / Dec. 15, 2006

Women's Basketball / Contact: Chris Glowacki, Assistant Athletic Media Relations Director

LADY TOPPER ALL-TIME CENTENNIAL BASKETBALL TEAM ANNOUNCED

Bowling Green, Ky. — As a part of Western Kentucky University's 2006 Centennial Celebration, the Department of Athletics invited fans to vote on their favorites to select All-Time Hilltopper and Lady Topper Teams in football, men's basketball and women's basketball.

The ballots have been counted and 15 former Lady Topper standouts have been selected — by popular vote — for berths on the WKU All-Time Centennial Women's Basketball Team.

All 44 nominees on the ballot received votes and an additional dozen attracted attention, winning write-in votes. Included on the team are nine Topper All-Americans, thirteen 1,000-point scorers, eight WKU Female Athlete-of-the-Year winners and five former Kentucky High School Miss Basketball honorees. The Honorary Captain is leading vote-getter Clemette Haskins ('84-87). Here's a rundown (in alphabetical order) of the former Lady Toppers — some of the greatest women's basketball athletes in school history along with some of the most popular women who wore the Red and White:

- Jamie Britt ('97-00) — All-Sun Belt; 142 games (42 starts), 943 points (7.9 ppg), 418 rebounds (3.5 rpg), 178 assists, 83 steals
- Brenda Chapman ('75-78) — 94+ games, 1,436 points (15.3 ppg), 81.3 FT% / note: complete stats not available
- Gwen Doyle ('94-95) — All-American, All-Sun Belt, WKU Athlete-of-the-Year; 62 games (60 starts), 908 points (14.6 ppg), 481 rebounds (7.8 rpg), 149 assists, 154 steals
- Tandreia Green ('87-90) — All-American, All-Sun Belt, SBC Tourney MVP, WKU Athlete-of-the-Year; 125 games (94 starts), 1,781 points (14.3 ppg), 875 rebounds (7.0 rpg), 215 blocks, 203 steals
- Clemette Haskins ('84-87) — All-American, All-Sun Belt, WKU Athlete-of-the-Year; 128 games (114 starts), 1,762 points (13.8 ppg), 484 rebounds (3.8 rpg), 731 assists, 235 steals
- Leslie Johnson ('97-98) — All-American, All-Sun Belt; 64 games (60 starts), 1,079 points (16.9 ppg), 472 rebounds (7.4 rpg), 57.6 FG%, 189 blocks
- Crystal Kelly ('05-to date) — All-American, All-Sun Belt; 72 games (72 starts), 1,443 points (20.0 ppg), 672 rebounds (9.8 rpg), 60.7 FG%, 67 blocks, 89 steals / note: stats through Dec. 9, 2006
- ShaRae Mansfield ('98-01) — All-American, All-Sun Belt, WKU Athlete-of-the-Year; 127 games (91 starts), 1,804 points (14.2 ppg), 1,000 rebounds (7.9 rpg), 53.6 FG%, 140 assists, 133 blocks, 130 steals
- Lillie Mason ('82-83, '85-86) — All-American, All-Sun Belt, SBC Tourney MVP; 125 games (121 starts), 2,262 points (18.1 ppg), 1,012 rebounds (8.1 rpg), 55.8 FG%, 118 assists, 243 blocks, 134 steals
- Laura Ogles ('84-87) — 134 games (23 starts), 759 points (5.7 ppg), 378 rebounds (2.8 rpg), 50.1 FG%, 80.8 FT%
- Kim Pehlke ('89-92) — All-Sun Belt, SBC Tourney MVP, WKU Athlete-of-the-Year; 127 games (97 starts), 1,487 points (11.7 ppg), 332 rebounds (2.7 rpg), 41.6 3-PT%, 374 assists, 153 steals
- Tiffany Porter-Talbert ('03-06) — All-American, All-Sun Belt, WKU Athlete-of-the-Year; 127 games (125 starts), 2,028 points (16.0 ppg), 995 rebounds (7.8 rpg), 378 assists, 257 steals
- Mary Taylor ('88-91) — SBC Tourney MVP, WKU Athlete-of-the-Year; 125 games (74 starts), 1,072 points (8.6 ppg), 600 rebounds (4.8 rpg), 125 assists, 140 steals
- Kami Thomas ('83-86) — All-American, All-Sun Belt, WKU Athlete-of-the-Year; 128 games (120 starts), 1,796 points (14.0 ppg), 510 rebounds (4.0 rpg), 70.7 FT%, 335 assists
- Renee Westmoreland ('90-93) — All-Sun Belt; 125 games (86 starts), 1,258 points (10.1 ppg), 366 rebounds (2.9 rpg), 40.9 3-PT%, 80.3 FT%, 477 assists, 203 steals

-WKU-

Office of Athletic Media Relations / Room 1140 / E.A. Diddle Arena
Western Kentucky University / 1605 Avenue of Champions / Bowling Green, Ky. 42101-6412
Telephone — (270) 745-4298 / FAX — (270) 745-3444 / e-mail — sports.information@wku.edu
Hilltopper Athletics on the World Wide Web — www.wkusports.com

Keyword Search



ESPN.com **Women's College Basketball**

Tuesday, January 30, 2001

20 Questions: ShaRae Mansfield

ESPN.com

ESPN.com wants to give you a quick look inside the lives of the players we cover. Every Tuesday throughout the season, we'll feature a new student-athlete who has taken the time to answer our 20 Questions.

ShaRae Mansfield, Western Kentucky

Vitals: 6-2 senior forward

2000-2001 stats: The preseason first-team All-America selection (Street & Smith's) is averaging 19.7 points and 9.7 rebounds in 19 games. She's shooting 47.4 percent from the field, 81.6 percent from the free-throw line.

Career stats: On track to become the second player in school history -- and the sixth in the Sun Belt Conference -- to record 1,000 career points and 1,000 career rebounds. Currently has 1,559 points, 887 rebounds (which ranks second in school history) in 115 career games. Has scored in double figures in 75 consecutive games. Last single-digit outing was Nov. 22, 1998. Has posted 37 career double-doubles, 31 in the past 51 games. Lady Toppers are 30-7 all-time when Mansfield notches a double-double, including a 7-2 record this year. A two-time All-Sun Belt pick.



Mansfield

[SportsMail](#)

[NFL | Playoffs](#)

[College Football](#)

[NBA](#)

[M College BB](#)

[NHL](#)

[Golf Online](#)

[W College BB](#)

[Baseball](#)

[College Sports](#)

[Tennis](#)

[Motors](#) [NASCAR](#)

[Boxing](#)

[Horse Racing](#)

[Extreme Sports](#)

[Soccer](#)

[Soccernet.com](#)

[ESPNdeportes](#)

[More Sports](#)

- 1 **If you could be a cartoon character or super hero, who would you be and why?**
Wonder Woman – because she can overcome any obstacle.
- 2 **What was your parents' favorite saying?**
"Treat others like you want to be treated."
- 3 **Who's the best player you've ever faced?**
Chamique Holdsclaw.
- 4 **Who's the one player, man or woman, you'd want to take one-on-one?**
Sheryl Swoopes – because she's my favorite player.
- 5 **What's your favorite movie?**
Love and Basketball.
- 6 **What's your favorite TV show?**
Soul Food -- The Series.
- 7 **What's the last CD you bought?**
Carl Thomas.
- 8 **How did you get started playing basketball?**
I started playing basketball because I got tired of people stopping me and saying, "Hey, you're tall ... I know you play ball."
- 9 **Why do you wear your jersey number?**
I wear No. 45 because it's my lucky number.
- 10 **What's your favorite pre-game meal?**
Hot wings and fries.
- 11 **What's your favorite junk food?**
Lay's Classic potato chips with hot sauce on top.
- 12 **If you could invite any three people (dead or alive) to dinner, who would they be?**
Dr. Martin Luther King, Halle Berry and Harrison Ford.
- 13 **If you were stuck on a deserted island, what's the only thing you'd take with you?**
A basketball.
- 14 **What is the one thing you can't get through the day without?**
Breathing.
- 15 **If a movie was made about you, which actress would you like to see cast to play you?**
Vanessa Williams.
- 16 **If you weren't a basketball player, what would you be?**
I would pursue a singing career.
- 17 **What's something we don't know about you?**
I love to sing and write music. I've already performed the national anthem twice before Lady Topper games during my career.
- 18 **If you changed your name, what would you change it to?**
I don't want to change my name. It's pretty unique as it is.

- 19** When you think of St. Louis, what do you think of (other than the Final Four)?
The Gateway Arch.
- 20** What does ESPN stand for?
Expect ShaRae to Produce Nightly.

ESPN.com: [HELP](#) | [ADVERTISER INFO](#) | [CONTACT US](#) | [TOOLS](#) | [SITE MAP](#)

Copyright ©2000 ESPN Internet Group. [Terms of Use](#) and [Privacy Policy and Safety Information](#) are applicable to this site.
[Employment opportunities](#) at ESPN.com.

WKU greats return

By ZACH GREENWELL The Daily News [zgreenwell@bgdailynews.com/783-3239](mailto:zgreenwell@bgdailynews.com) | Posted: Saturday, February 9, 2013 2:00 am

The Western Kentucky women's basketball team is enjoying the present, but today it will honor the past.

The Lady Toppers (17-5, 10-3 Sun Belt Conference) will recognize the 10 members of their All-Diddle Arena team at halftime of today's 4 p.m. game against Arkansas State at E.A. Diddle Arena.

"It lets them know about myself as a coach and where my passion comes from – my pride," said WKU coach Michelle Clark-Heard, a former Lady Topper. "My face kind of lights up when I talk about those players and the things that have happened."

The members of the women's All-Diddle Arena team are Brenda Chapman, Dominique Duck, Clemette Haskins, Crystal Kelly, ShaRae Mansfield, Lillie Mason, Kim Pehlke, Tiffany Porter-Taibert, Natalie Powers and Kami Thomas.

Fans voted for the men's and women's teams over a two-month period as part of the "50 Seasons of Diddle Arena" celebration.

To be on the ballot, a player had to play a minimum of two varsity seasons at WKU – with at least one in Diddle Arena – and meet at least one of the following criteria: Member of the WKU Athletic Hall of Fame, named to an All-America team, named either Ohio Valley or Sun Belt Conference Player of the Year, or selected all-conference in two or more seasons.

The men's All-Diddle Arena team will be recognized during the Hilltoppers' nightcap of the doubleheader against Arkansas State.

"I was talking to Dominique about it, and I know her and her whole family are going to be there," said Kelly, WKU's all-time leading scorer and rebounder. "And I was texting (men's star and current Boston Celtic) Courtney (Lee) about it, totally forgetting that he was in season. It's really neat that I played with and know some of those players."

Kelly, who's in her first season as an assistant coach at Bellarmine University, won't attend the ceremony because the Lady Knights have a game today.

As of earlier this week, about five of the Lady Tops on the list were expected to attend. One that will definitely be there is Mansfield, who's an assistant on the WKU staff.

"There's been some amazing athletes that have played here at Western," Mansfield said. "To be on the same team as a Lillie Mason or a Clemette Haskins, it's awesome."

Five decades are represented on the women's All-Diddle Arena team, starting with Chapman (1975-78) and ending with Duck (2006-10).

Thomas, now Kami Thomas Howard, will be in attendance. The former guard, who was named All-Sun Belt each season from 1983-86, thinks the voting results show the loyalty of Lady Topper fans, she said.

"That's who remembers me," Howard said. "Back in the '80s, we had a lot of true followers of Lady Topper basketball. It's because of them that I'm voted in with such a special group."

WKU is three wins away from 850 victories in program history. With a team as historically successful as the Lady Toppers, it's important to keep that tradition alive, Howard said.

"I think any program has to remember the history," she said. "I think it's good for the present players to remember that this program is one of the top in the nation, and that it's up to each player to keep that going."

Even with all the records Kelly broke during her career, she says it still wasn't enough in retrospect. WKU reached one NCAA tournament during her career and fell in the first round to Texas-El Paso.

If there's any wisdom she would impart to the current roster, Kelly said, it's for the players to take note of how hard those before them worked for their success.

"You have to know what it takes, and it takes so much hard work to get the program where it needs to be," Kelly said. "Countless hours in the gym. It's weird being outside of it and being older now, how much more you think you could have done when you were there."

"The girls have to know how important it is to everyone and the history that was there long before I got there."

Lady Tops trying

to pay back ASU

WKU will look to avenge a Jan. 6 loss to Arkansas State (12-11, 9-5) today.

The Red Wolves have lost two straight, including a 93-49 drubbing at Middle Tennessee, since winning seven in a row, but Heard's not buying that they're in a spiral.

"They're not going to struggle when they come in here. I know that," Heard said.

The Lady Tops' 63-58 loss at ASU was their first road defeat of the season. WKU led by one at halftime but struggled with 24 turnovers and a disjointed effort.

The Lady Toppers are coming off a 76-62 win Thursday at North Texas.

"That Arkansas State game was probably the most out of sync we've been all year, so we'll have to make sure to continue to play the way we have been lately," Heard said.

The Red Wolves are led by junior forward Jane Morrill, who averages 14.6 points and 5.8 rebounds per game. The game will be broadcast on WKYU-PBS, ESPN3 and ESPN Full Court.

Promotions

Today's game is the annual Play4Kay Day to support breast cancer awareness and research. The Lady Toppers will wear pink uniforms, and the first 500 fans will receive a free Play4Kay pink T-shirt.

All tickets to the game are \$1 as part of the NCAA Pack the House Challenge, and as part of Daddy/Daughter Date Night, all pairs of fathers and daughters who attend receive complimentary tickets and can compete in halftime contests for prizes.

All-Diddle Arena Team (Women)

- Brenda Chapman (1975-78) — WKU Athletic Hall of Fame (1992)
- Dominique Duck (2006-08; 2010) — All-Sun Belt (2007, 2008)
- Clemette Haskins (1984-87) — WKU Athletic Hall of Fame (1997); All-American (1984, 1986, 1987); All-Sun Belt (1984, 1985, 1986, 1987)
- Crystal Kelly (2004-08) — All-American (2005, 2007, 2008), Sun Belt Player of the Year (2008); All-Sun Belt (2005, 2006, 2007, 2008)
- ShaRae Mansfield (1998-2001) — All-American (2000); All-Sun Belt (1999, 2000, 2001)
- Lillie Mason (1982-83; 1985-86) — WKU Athletic Hall of Fame (1996); All-American (1982, 1983, 1986), Sun Belt Player of the Year (1986), All-OVC (1982); All-Sun Belt (1983, 1984, 1985, 1986)
- Kim Pehlke (1989-92) — WKU Athletic Hall of Fame (2004); All-Sun Belt (1991, 1992)
- Tiffany Porter-Talbert (2003-06) — All-American (2003), Sun Belt Player of the Year (2005); All-Sun Belt (2004, 2005, 2006)
- Natalie Powers (1998; 2000-02) — All-Sun Belt (2001, 2002)
- Kami Thomas (1983-86) — WKU Athletic Hall of Fame (1998); All-Sun Belt (1983, 1984, 1985, 1986)

Tipoff

4 p.m. today

Place

E.A. Diddle Arena (7,326) in Bowling Green

Records

Arkansas State (12-11, 9-5 Sun Belt Conference)

Western Kentucky (17-5, 10-3)

Television

WKYU-Insight Channel 11/ESPN3/ESPN Full Court

Radio

WPTQ 103.7-FM

Coaches

Brian Boyer (223-196, 14th year; 223-196 overall), Arkansas State; Michelle Clark-Heard (17-5, first year; 41-37 overall), Western Kentucky.

Probable starters

ARKANSAS STATE

Quinishia McDowell, G, 5-8 sr. (5.3 ppg, 3 rpg); Ashley Olvera, G, 5-8 sr. (8.6 ppg, 4 apg); Hanna Qedan, G, 5-11 so. (8.7 ppg, 4.5 rpg); Carlisha Wyatt, F, 6-0 jr. (6.7 ppg, 6 rpg); Jane Morrill, F, 6-1 jr.

WESTERN KENTUCKY

Micah Jones, G, 5-8 fr. (5.9 ppg, 3.5 rpg); Alexis Govan, G, 5-8 so. (19.5 ppg, 5.7 rpg); Bianca McGee, G, 5-9 jr. (14.8 ppg, 4 rpg); Jalynn McClain, F, 6-0 fr. (6.9 ppg, 4.3 rpg); Chastity Gooch, F, 6-0 so. (17 ppg, 11.5 rpg).

Series record

WKU leads 30-17.

Last meeting

WKU lost 63-58 on Jan. 6 in Jonesboro, Ark.

Last time out

Arkansas State lost 93-49 at Middle Tennessee on Wednesday; WKU won 76-62 at North Texas on Thursday.

